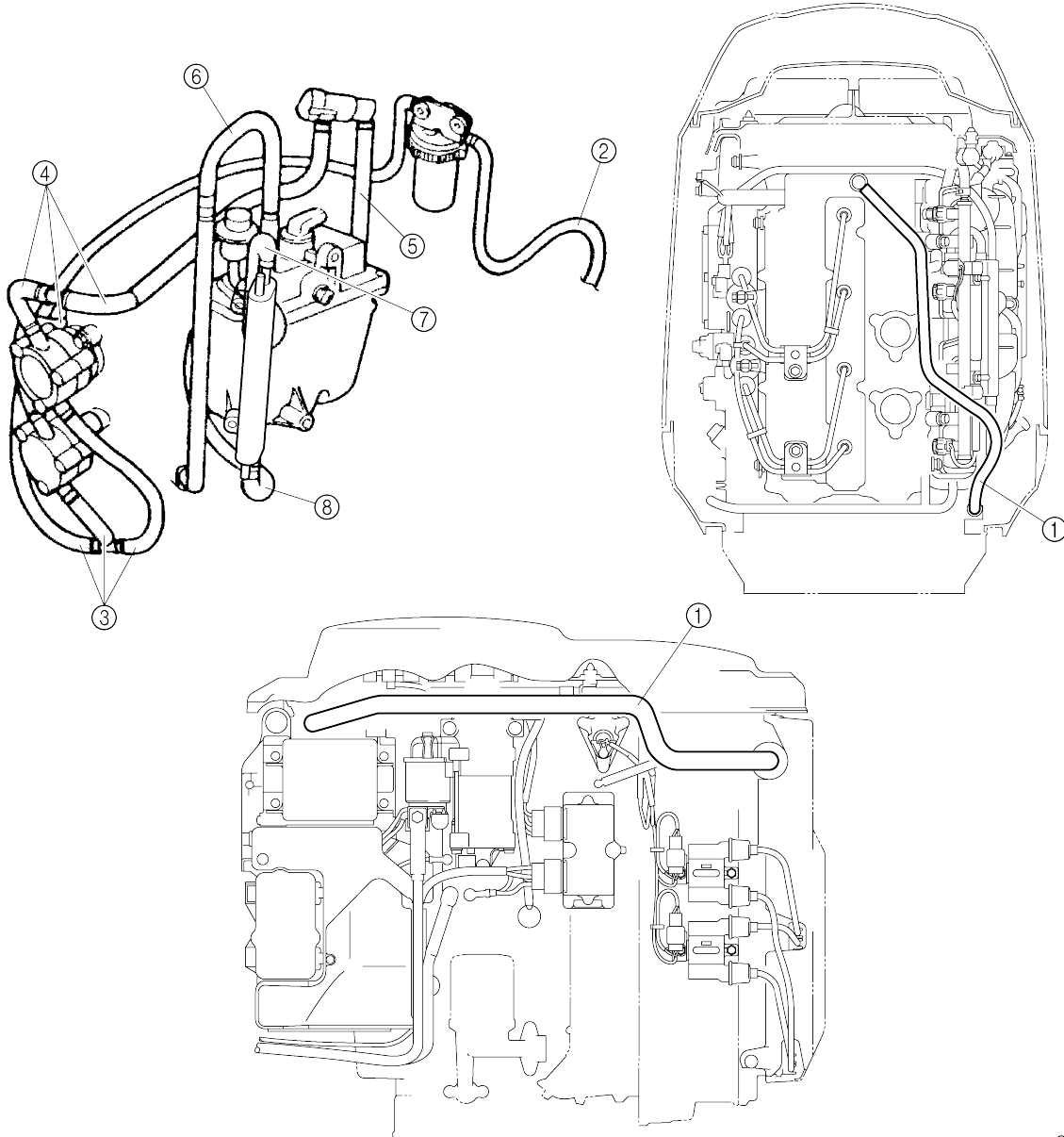


Hose routing

Fuel and blowby hoses



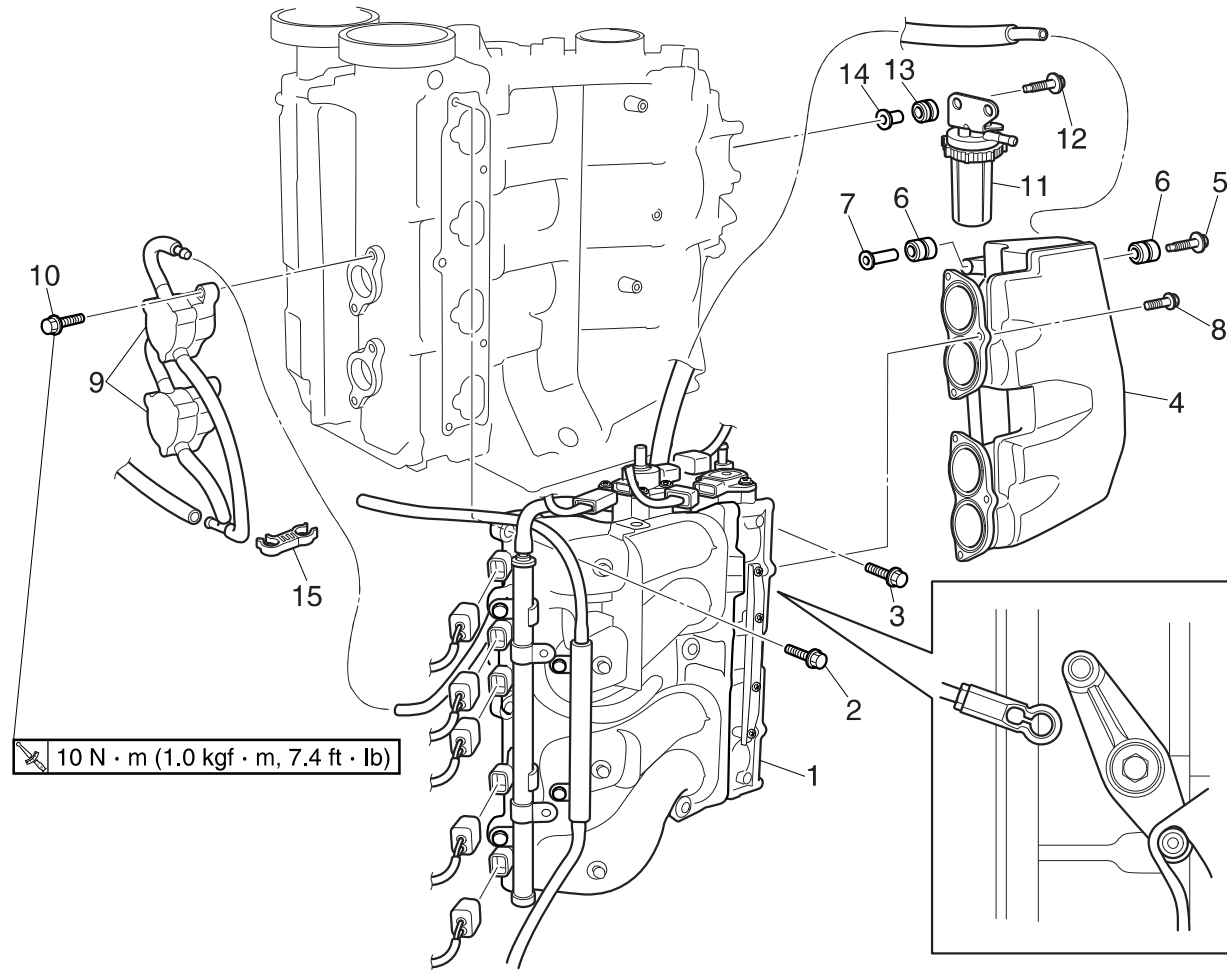
4

- ① Blowby hoses
- ② Fuel hose (fuel tank-to-fuel filter)
- ③ Fuel hoses (fuel filter-to-fuel pumps)
- ④ Fuel hoses (fuel pumps-to-fuel filter)
- ⑤ Fuel hose (fuel filter-to-vapor separator)
- ⑥ High-pressure fuel hose (vapor separator-to-fuel rail)
- ⑦ Fuel hose (pressure regulator-to-fuel cooler)
- ⑧ Fuel hose (fuel cooler-to-vapor separator)

S63P4060

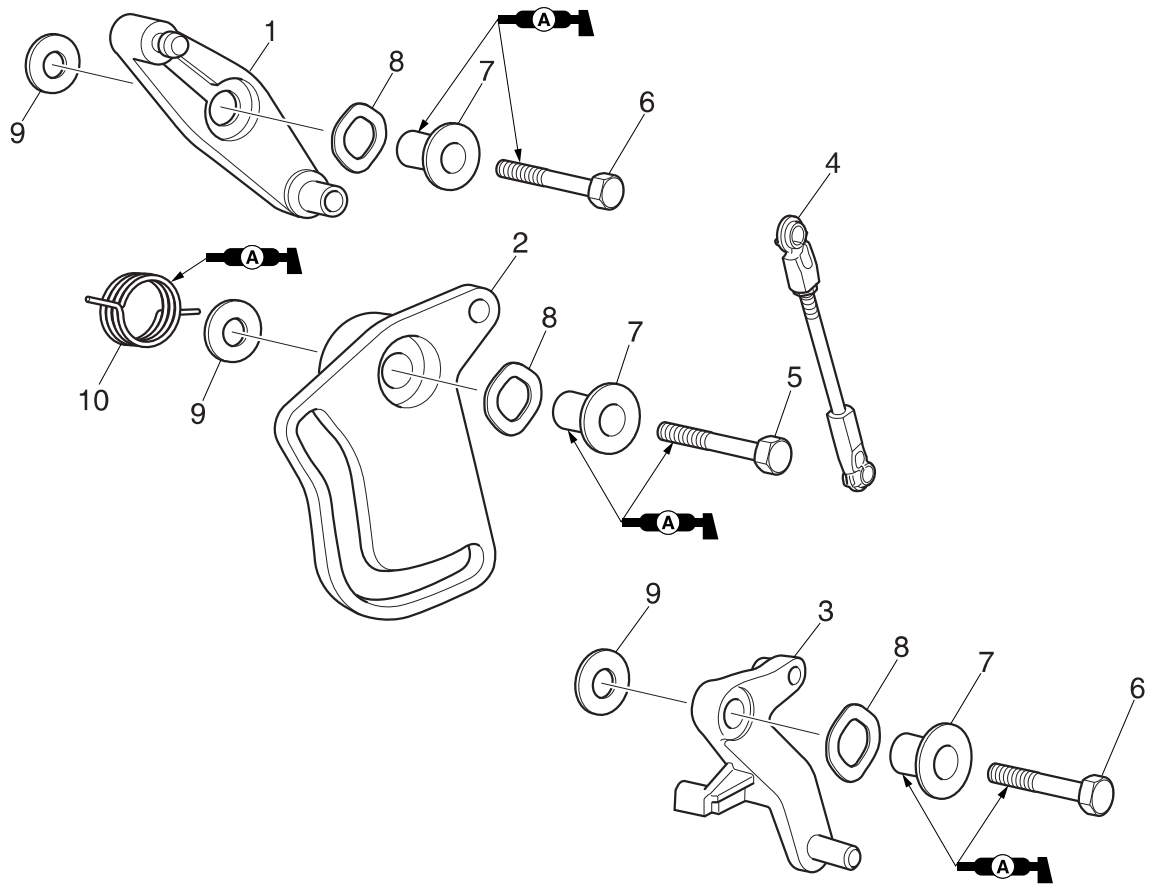


Fuel filter, fuel pump, and intake silencer



S63P4070

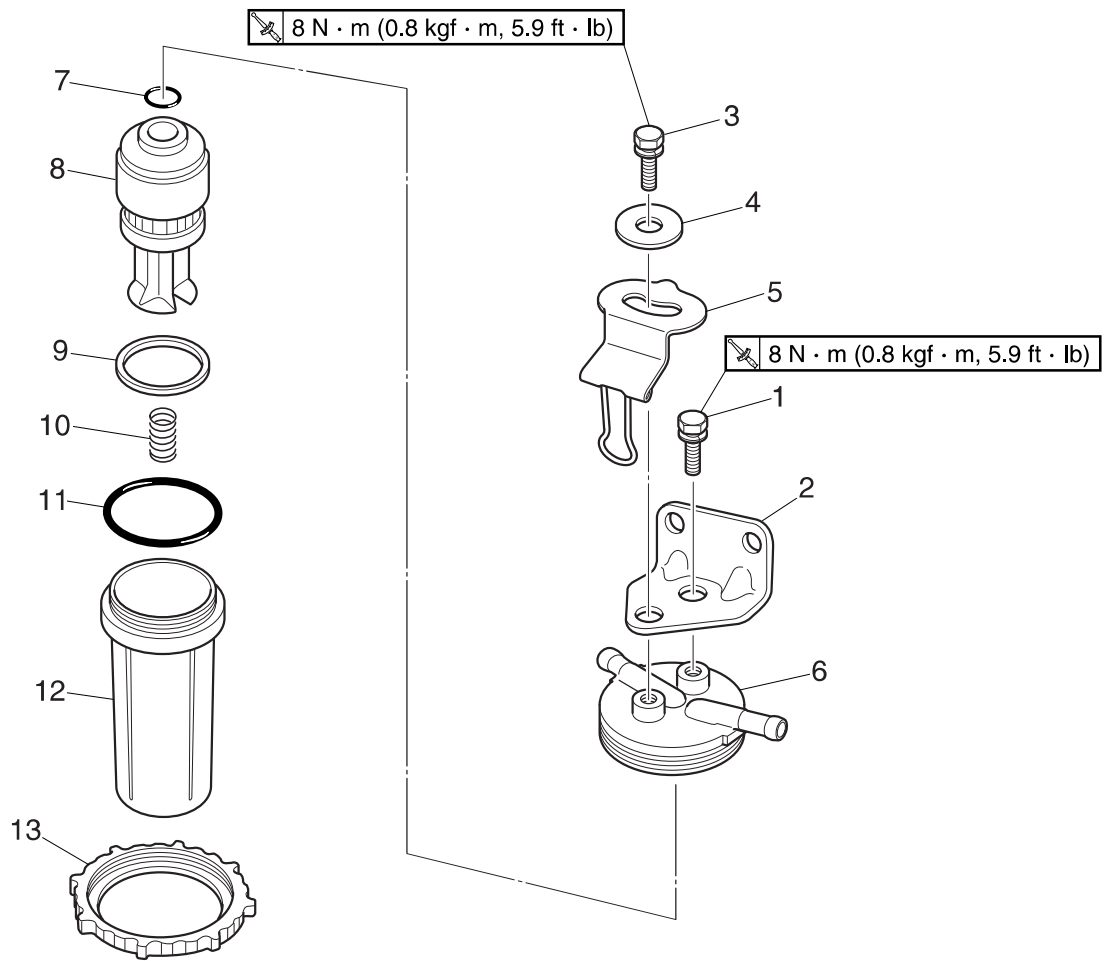
No.	Part name	Q'ty	Remarks
1	Intake assembly	1	
2	Bolt	5	M8 × 40 mm
3	Bolt	2	M8 × 20 mm
4	Intake silencer	1	
5	Bolt	2	M6 × 45 mm
6	Grommet	4	
7	Collar	2	
8	Bolt	6	M6 × 20 mm
9	Fuel pump	2	
10	Bolt	4	M6 × 30 mm
11	Fuel filter	1	
12	Bolt	2	M6 × 30 mm
13	Grommet	2	
14	Collar	2	
15	Holder	1	



4

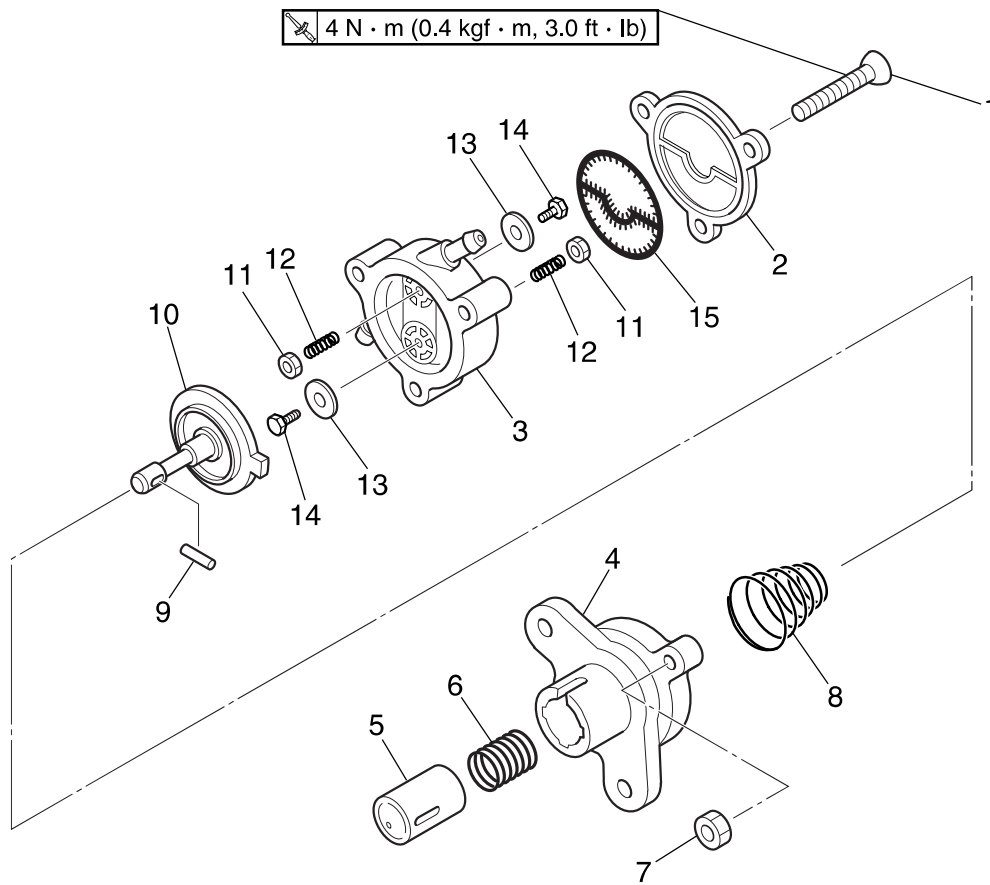
S63P4080

No.	Part name	Q'ty	Remarks
1	Throttle lever 1	1	
2	Throttle cam	1	
3	Throttle lever 2	1	
4	Throttle link rod	1	
5	Bolt	1	M6 × 35 mm
6	Bolt	2	M6 × 25 mm
7	Collar	3	
8	Wave washer	3	
9	Washer	3	
10	Spring	1	



S63P4040

No.	Part name	Q'ty	Remarks
1	Bolt	1	M6 × 14 mm
2	Bracket	1	
3	Bolt	1	M6 × 16 mm
4	Washer	1	
5	Holder	1	
6	Cap	1	
7	O-ring	1	Not reusable
8	Fuel filter element	1	
9	Float	1	
10	Spring	1	
11	O-ring	1	Not reusable
12	Cup	1	
13	Nut	1	



4

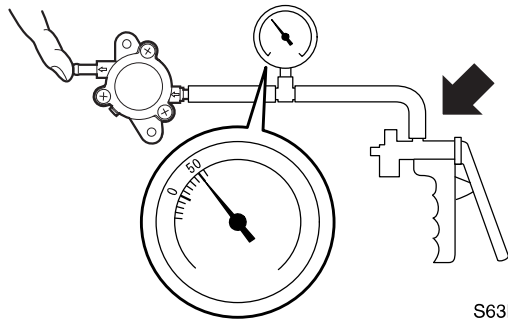
S63P4050

No.	Part name	Q'ty	Remarks
1	Screw	3	ø6 × 35 mm
2	Cover	1	
3	Fuel pump body 2	1	
4	Fuel pump body 1	1	
5	Plunger	1	
6	Spring	1	
7	Nut	3	
8	Spring	1	
9	Pin	1	
10	Diaphragm	1	
11	Nut	2	
12	Spring	2	
13	Valve	2	
14	Screw	2	
15	Gasket	1	Not reusable





Checking the fuel pumps

1. Place a drain pan under the fuel hose connections, and then disconnect the fuel hoses from the fuel pumps.
2. Connect the special service tool to the fuel pump inlet.
3. Cover the fuel pump outlet with a finger, and then apply the specified positive pressure. Check that there is no air leakage.

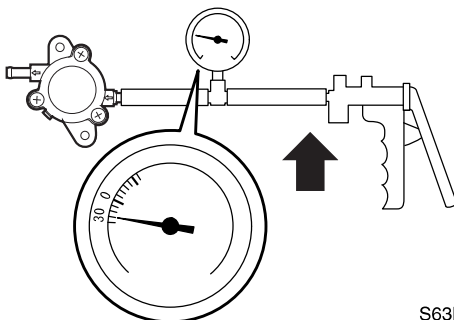


S63P4090


 Vacuum/pressure pump gauge set:
90890-06756

 Specified pressure:
50 kPa (0.5 kgf/cm², 7.3 psi)

4. Apply the specified negative pressure and check that there is no air leakage.

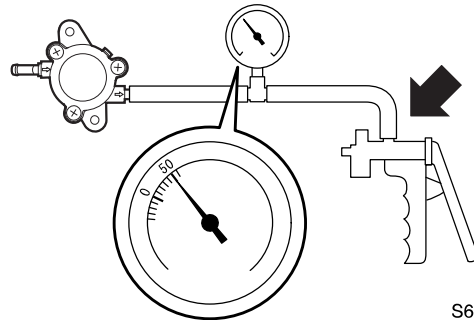


S63P4100


 Specified pressure:
30 kPa (0.3 kgf/cm², 4.4 psi)

5. Connect the special service tool to the fuel pump outlet.

6. Apply the specified positive pressure and check that there is no air leakage. Disassemble the fuel pump if necessary.



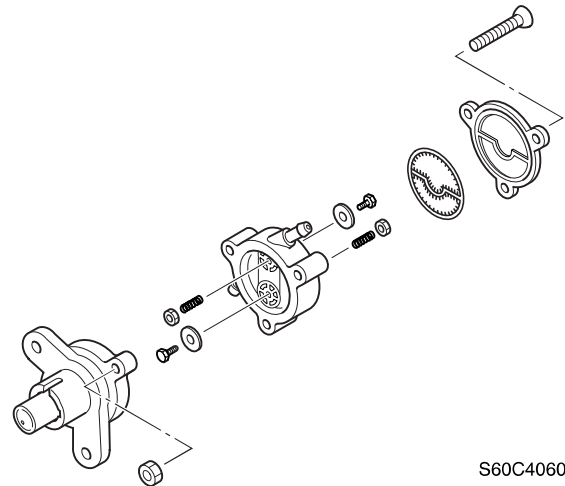
S63P4110

 Specified pressure:
50 kPa (0.5 kgf/cm², 7.3 psi)

NOTE:
Assemble the fuel pump valve to the fuel pump body, and moisten the inside of the fuel pump with gasoline to ensure a good seal.

Disassembling a fuel pump

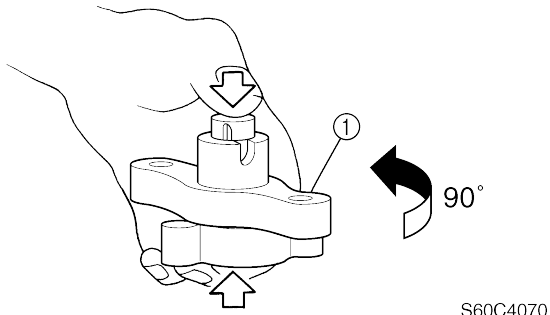
1. Disassemble the fuel pump as shown.



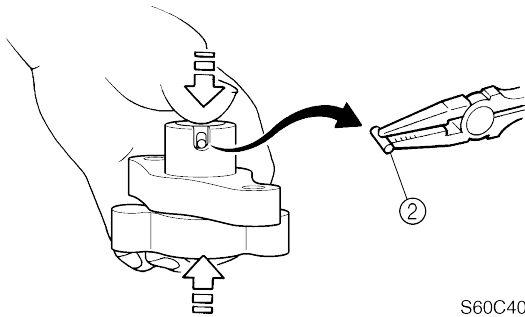
S60C4060

Fuel filter, fuel pump, and intake silencer

2. Push down on the plunger and the diaphragm, turn fuel pump body 1 ① approximately 90° to a position where the pin ② can be removed easily, and then remove the pin.



S60C4070

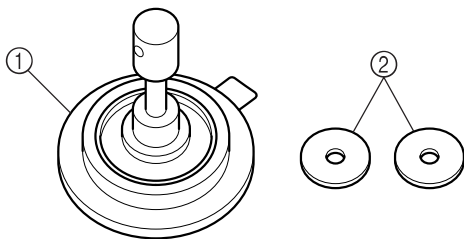


S60C4080

3. Slowly let up on the plunger and diaphragm, and then remove them.

Checking the diaphragm and valves

1. Check the diaphragm ① for tears and the valves ② for cracks. Replace if necessary.



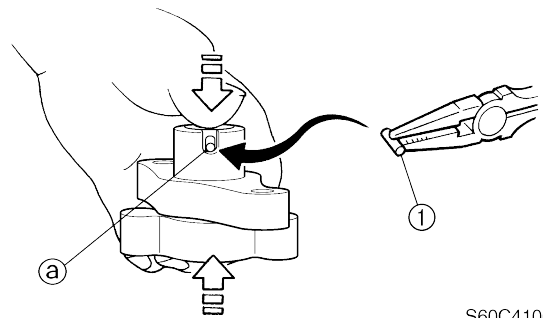
S60C4090

Assembling a fuel pump

NOTE:

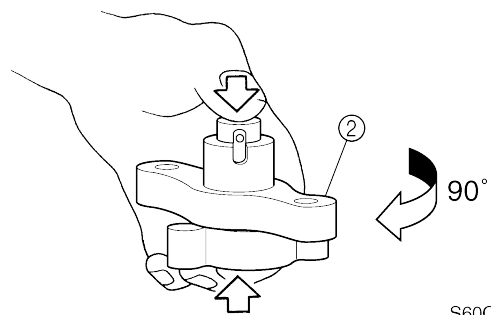
Clean the parts and soak the valves and the diaphragm in gasoline before assembly to obtain prompt operation of the fuel pumps when starting the engine.

1. Align the plunger and diaphragm installation holes ①, and then install the plunger into the diaphragm.
2. Push down on the plunger and the diaphragm, and then install the pin ①.



S60C4100

3. Turn fuel pump body 1 ② approximately 90°, and then push down on the plunger several times to make sure that the pin does not come out.



S60C4110

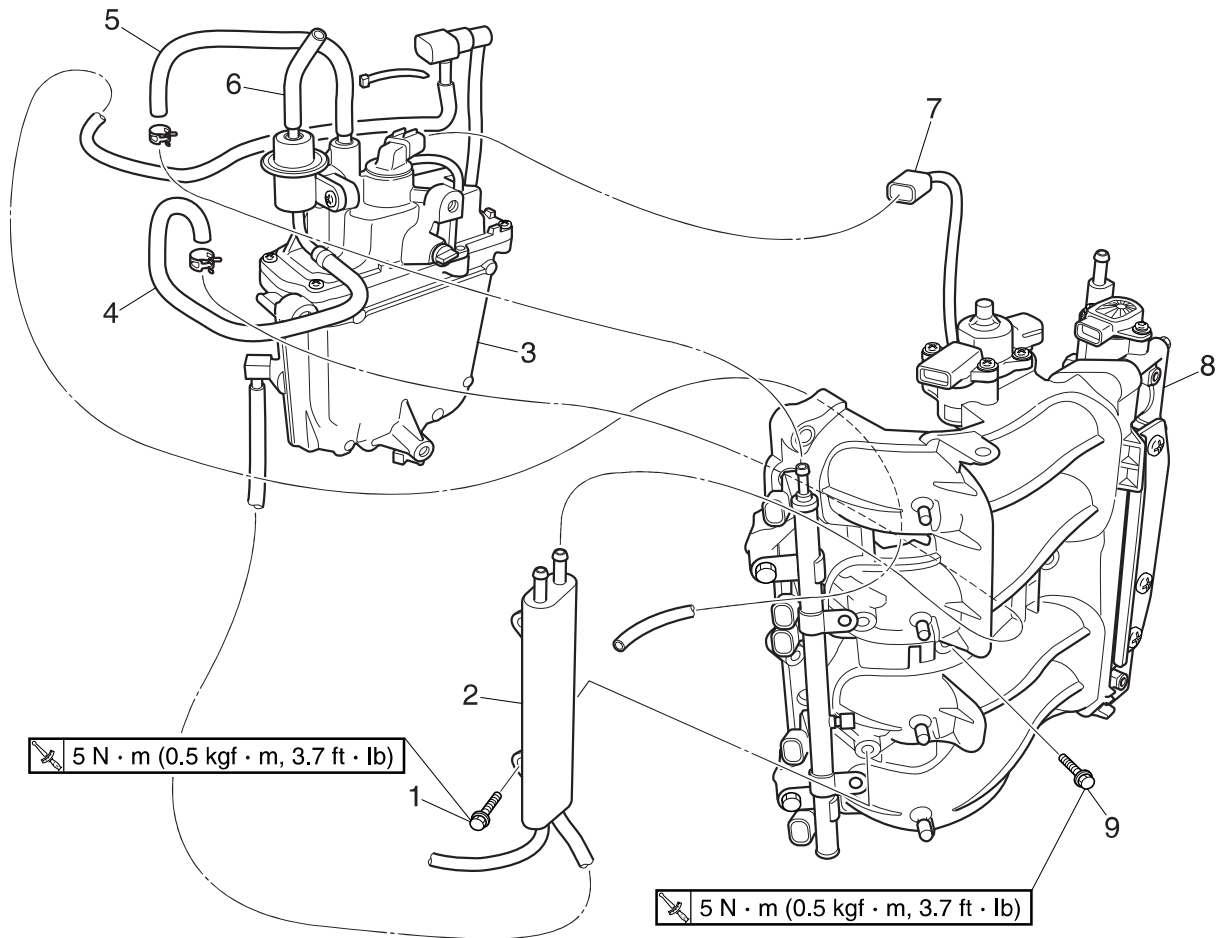
NOTE:

Make sure that the gasket and diaphragm are kept in place through the assembly process.

4

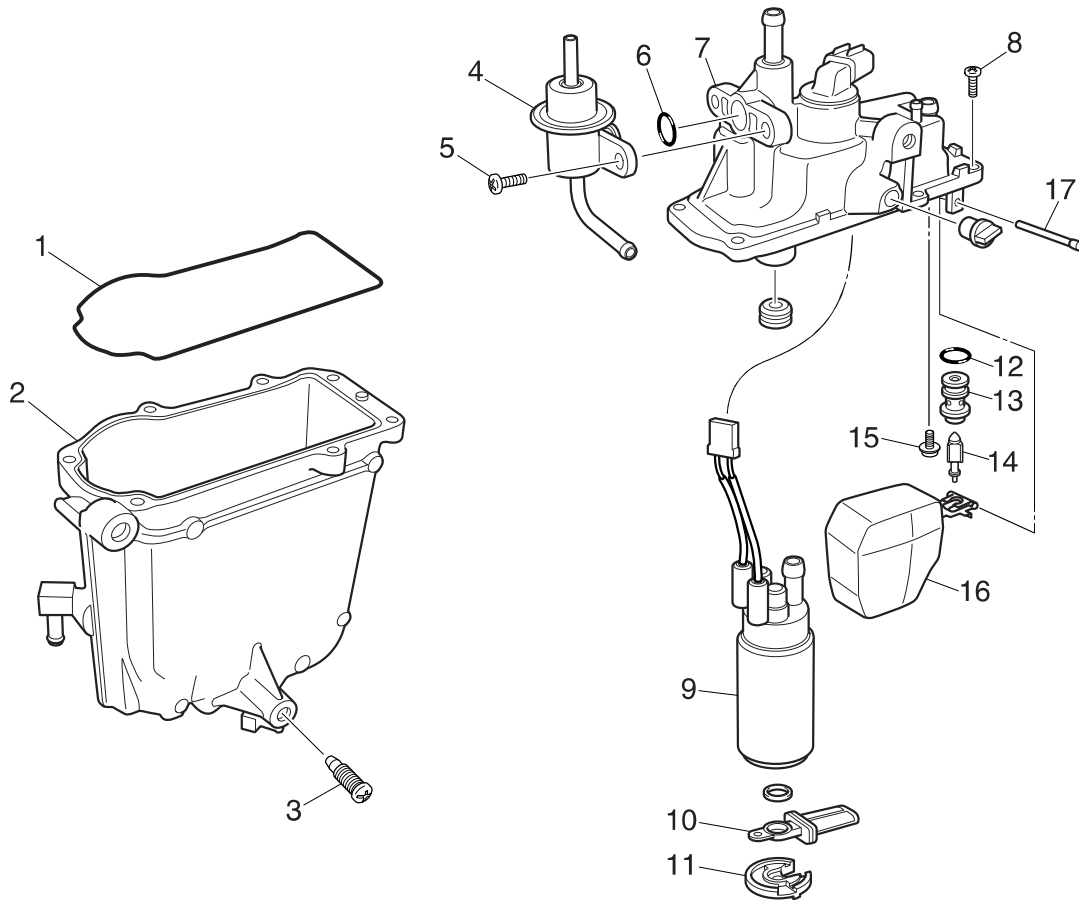


Intake assembly and vapor separator



S63P4010

No.	Part name	Q'ty	Remarks
1	Bolt	2	M6 × 25 mm
2	Fuel cooler	1	
3	Vapor separator	1	
4	Fuel hose	1	
5	Fuel hose	1	
6	Hose	1	
7	Electric fuel pump coupler	1	
8	Intake assembly	1	
9	Bolt	3	M6 × 35 mm



4

S63P4030

No.	Part name	Q'ty	Remarks
1	O-ring	1	Not reusable
2	Float chamber	1	
3	Drain screw	1	
4	Pressure regulator	1	
5	Screw	2	M6 × 12 mm
6	O-ring	1	Not reusable
7	Cover	1	
8	Screw	7	ø4 × 16 mm
9	Electric fuel pump	1	
10	Filter	1	
11	Filter holder	1	
12	O-ring	1	Not reusable
13	Collar	1	
14	Needle valve	1	
15	Screw	1	ø4 × 8 mm
16	Float	1	
17	Pin	1	