

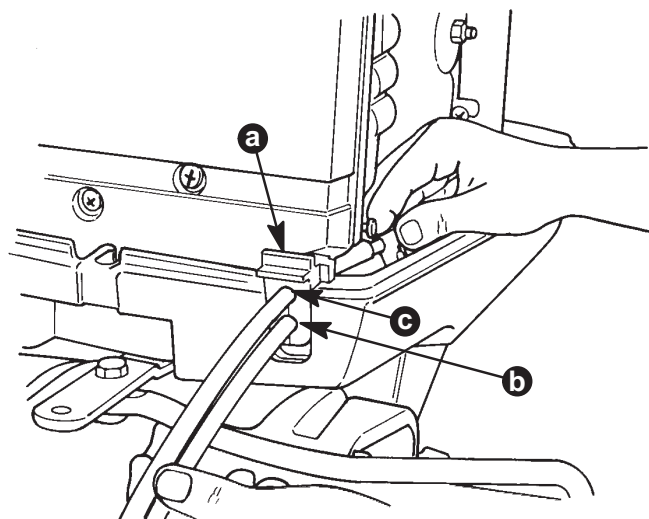


Remote Control Installation

IMPORTANT: Connect control cables to remote control and mount remote control **BEFORE** attaching control cables to engine.

Install throttle and shift cables to remote control and mount remote control as outlined in the installation instructions which accompany the remote control.

NOTE: It will be necessary to lift control cable rubber grommet out of opening in bottom cowl, so that control cables can be routed thru grommet and into bottom cowl.



- a - Control Cable Rubber Grommet
- b - Shift Cable Opening
- c - Throttle Cable Opening

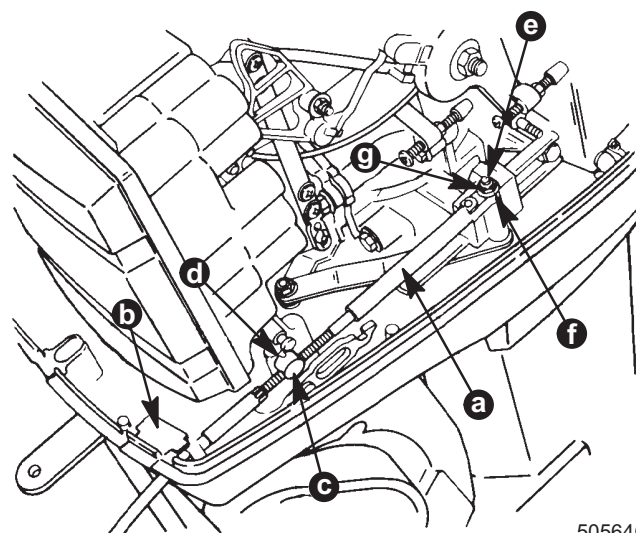
Shift Cable Installation and Adjustment to Engine

NOTE: Attach shift cable to engine first. Shift cable is the first cable to move when remote control handle is advanced from neutral position toward in-gear position.

If remote control has a neutral lock release, secure the release in the depressed position using a piece of tape. Now the true neutral detent can be found.

NOTE: Move remote control handle back and forth. You will feel three detent positions; center detent is neutral.

1. Position remote control handle into neutral detent.
2. Manually shift outboard into neutral (propeller will rotate freely).
3. Route shift cable (a) thru control cable grommet (b).
4. Adjust cable barrel (c) to attain the same length between cable barrel and hole in end of cable as exists between barrel receptacle (d) and shift actuator stud (e), keep a slight preload toward reverse.
5. Place end of shift cable on actuator stud (e), then place plastic washer (f) on stud and secure with locknut (g).

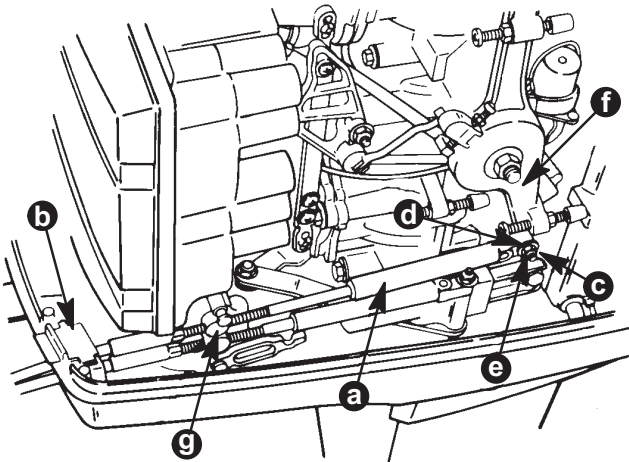


6. Check shift cable adjustment as follows:
 - a. **Shift remote control into forward gear.** Now, check prop shaft, the shaft should not be able to turn counterclockwise. If it does, adjust cable barrel closer to cable end guide.
 - b. **Shift remote control into neutral.** The prop shaft now should turn freely without drag. If not, adjust cable barrel away from cable end guide. Repeat steps a and b.
 - c. **Shift remote control into reverse as the prop shaft is rotated by hand.** The prop shaft should not be able to turn clockwise. If it does, adjust cable barrel away from cable end guide. Repeat steps a thru c.
 - d. **Shift remote control into neutral.** The prop shaft should turn freely without drag. If not, adjust cable barrel closer to cable end guide. Repeat steps a thru d.



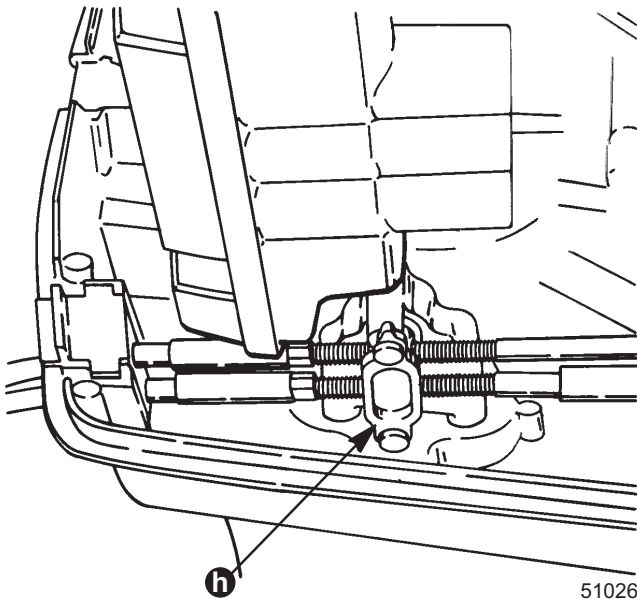
Throttle Cable Installation and Adjustment to Engine

1. Shift remote control into neutral.
2. Route throttle cable (a) thru control cable grommet (b).
3. Install throttle cable end (a) onto stud (c) of throttle lever. Place nylon washer (d) over stud and install locknut (e). Tighten locknut against throttle cable end to snug cable end against throttle lever, then back locknut off 1/4 turn.
4. Holding engine throttle lever (f) against idle stop, adjust throttle cable barrel (g) to slip into upper hole of barrel receptacle, with a very light preload of throttle lever against idle stop.



50564D

5. Lock barrels in place with barrel retainer (h).
6. Check preload on throttle cable by placing a thin piece of paper between idle stop screw and idle stop. Preload is correct when paper can be removed without tearing, but has some drag on it. Re-adjust cable barrel, if necessary.

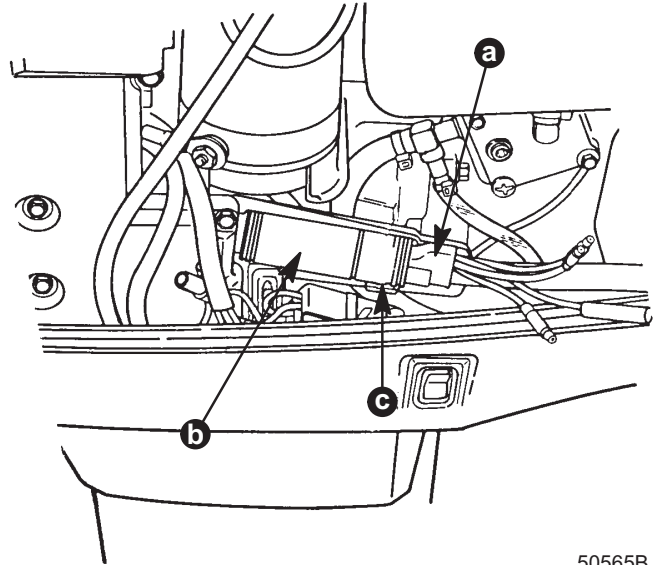


51026

Connecting Remote Control Wiring Harness to Engine Wiring Harness (Electric Start Models)

Route remote control harness or key switch harness along side of boat to engine, fastening harness to boat. Be sure that harness does not rub, get pinched or come in contact with bilge water.

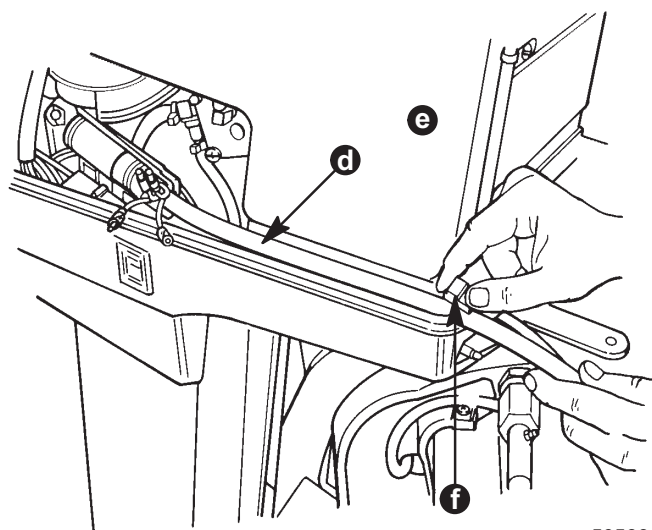
Plug remote control harness or key switch harness connector (a) into engine harness connector (b) and push connection securely into retainer (c).



50565B



Route remote control harness or key switch harness (d) along side oil tank (e) and out of bottom cowl thru opening (f) in battery cable grommet.



50566

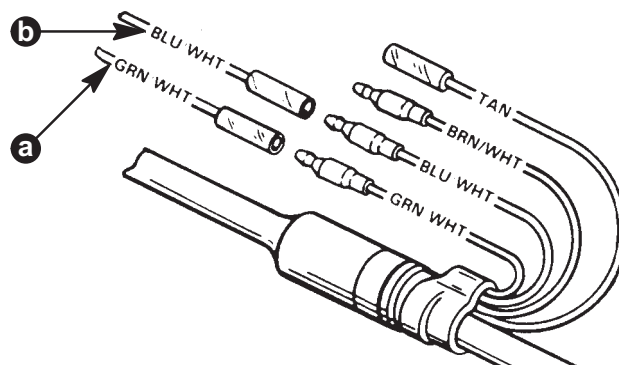
CAUTION

Remote control wiring harness and key switch wiring harness must be routed between control cable rubber grommet and engine harness connector, so that harness will not interfere with engine throttle and shift operation.

Power Trim Wiring Connections (Models So Equipped)

Make bullet connector wiring connection, between remote control wiring harness/key switch wiring harness and engine wiring.

IMPORTANT: Tape back and isolate any unused wiring harness leads.



a - Lead From Trim Solenoid (Down Solenoid)

b - Lead From Trim Solenoid (Up Solenoid)

Battery Connections

CAUTION

Failure to observe correct polarity when connecting battery cables to battery will result in damage to the charging system.

1. Connect battery cables (from engine) to battery. Connect red battery cable to positive (+) battery terminal and black battery cable to negative (-) battery terminal.