

YAMAHA
Marine
Outboards

70CE(6J2)

**PARTS
CATALOGUE**



YAMAHA MOTOR CO.,LTD.

106J2-100E1 ●

FOREWORD

This Parts Catalogue is related to the parts in use for the Yamaha outboard motor 70CE'90 (6J2). When you are ordering replacement parts for the 70CE'90(6J2), refer to this Parts Catalogue and quote both part numbers and part names correctly.

1. Modifications or additions which have been made after issue of the Parts Catalogue will be announced in the Yamaha Parts News.
It is advisable that according to the Yamaha Parts News you make necessary corrections to the Parts Catalogue on hand to keep it up-to-date.

2. Abbreviations

The following abbreviations are used in this Parts Catalogue.

- UR Use size (thickness) and/or number as required.
- UN Use as many as you need.
- AP Alternate Parts
- STD Standard
- O/S Over Size

3. Parts, which are to be supplied in the form of assemblies, are listed with an indentation of one letter's space, and a dot (.) is put against the name of each part.

EXAMPLE

- CARBURETOR ASS'Y
- . JET, pilot
- . NOZZLE, main

4. Indication of No. of constituent parts for assembly.

The numeral appearing to the right of each constituent part under the description indicates the quantity of such parts for each individual assembly unit.

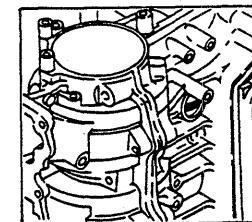
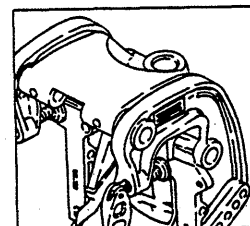
EXAMPLE

Part No.	Description	Q'ty	Remarks
6E0-85500-70	C.D.I. MAGNETO ASS'Y	1	
6E0-85550-70	. ROTOR ASS'Y	1	
6E0-15723-00-94	.. PULLEY, starter	1	

FOREWORD

5. Initial Serial No. and Color Code

Engine Serial No.	70CE S:000593 and following
-------------------	-----------------------------



Color Code	Color Name	Abbreviate
EJ	METALLIC MARINE BLUE	MMB

CONTENTS

Fig. 1	CYLINDER. CRANKCASE	1
Fig. 2	CRANKSHAFT. PISTON	3
Fig. 3	INTAKE	5
Fig. 4	CARBURETOR	7
Fig. 5	FUEL 1	9
Fig. 6	FUEL 2	11
Fig. 7	TOP COWLING	13
Fig. 8	BOTTOM COWLING	15
Fig. 9	BRACKET 1	17
Fig. 10	CONTROL	19
Fig. 11	UPPER CASING	21
Fig. 12	LOWER CASING. DRIVE 1	23
Fig. 13	LOWER CASING. DRIVE 2	25
Fig. 14	MAGNETO	27
Fig. 15	STARTING MOTOR	29
Fig. 16	ELECTRICAL 1	31
Fig. 17	ELECTRICAL 2	33
Fig. 18	OPTIONAL PARTS 1	35
Fig. 19	OPTIONAL PARTS 2	37
Fig. 20	OPTIONAL PARTS 3	39
Fig. 21	REPAIR KIT 1	41
Fig. 22	REPAIR KIT 2	43
	NUMERICAL INDEX	

Fig. 1 CYLINDER. CRANKCASE

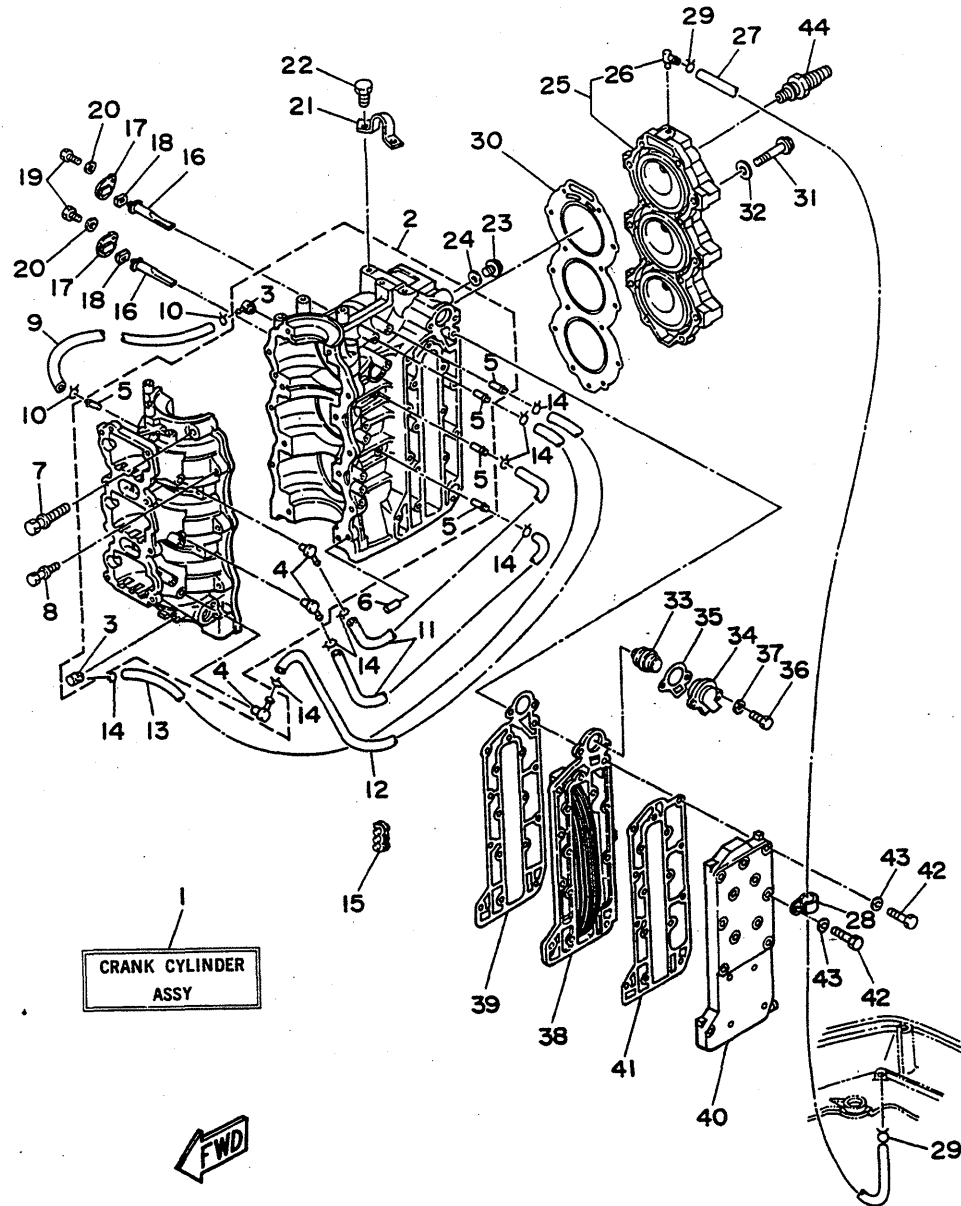


Fig. 1 CYLINDER. CRANKCASE

Ref.No.	Parts No.	Description	Q'ty	Ref.No.	Parts No.	Description	Q'ty
1	6J2-W0090-02-EJ	CRANK CYLINDER ASSY (Ref.No. 2 to 43 and Fig. 2, Ref.No. 1 to 18)	1	22	97313-08020	BOLT	2
2	6J2-15100-01-94	CRANKCASE ASSY	1	23	90340-14M00	PLUG, straight screw	1
3	688-11370-00	.CHECK VALVE ASSY	2	24	90430-14115	GASKET	1
4	650-11370-00	.CHECK VALVE ASSY	3	25	6J2-11111-01-94	HEAD, cylinder 1	1
5	624-14485-00	.PIPE, joint	5	26	676-11372-00	.NIPPLE, hose	1
6	93608-12063	PIN, dowel	2	27	90445-09M08	HOSE	1
7	90119-10M07	BOLT, with washer	8	28	90465-08028	CLAMP	1
8	90119-08M17	BOLT, with washer	6	29	90467-08004	CLIP	2
9	90445-07M44	HOSE	1	30	6H3-11181-01	GASKET, cylinder head 1	1
10	90467-06016	CLIP	2	31	90119-08M29	BOLT, with washer	14
11	90445-07M02	HOSE	2	32	90201-08M61	WASHER, plate	14
12	90445-07M45	HOSE	1	33	6H3-12411-01	THERMOSTAT	1
13	90445-07M82	HOSE	1	34	6H3-12413-00-9M	COVER, thermostat	1
14	90467-06016	CLIP	8	35	6H3-12414-00	GASKET, cover	1
15	90464-07M05	CLAMP	1	36	97313-06025	BOLT	2
16	6H3-11325-00	ANODE	2	37	92990-06600	WASHER, plate	2
17	6H3-11327-00-94	COVER, anode	2	38	6H3-41111-00-9M	INNER COVER, exhaust	1
18	6H3-11328-00	GROMMET, anode	2	39	6H3-41112-00	GASKET, exhaust inner cover	1
19	97313-06016	BOLT	2	40	6J2-41113-00-9M	OUTER COVER, exhaust	1
20	92990-06600	WASHER, plate	2	41	6H3-41114-00	GASKET, exhaust outer cover	1
21	688-11119-00	HANGER, engine	1	42	97013-06035	BOLT	16
				43	92990-06600	WASHER, plate	16
				44	94702-00247	PLUG, spark (NGK BR8HS 10)	3

Fig. 2 CRANKSHAFT. PISTON

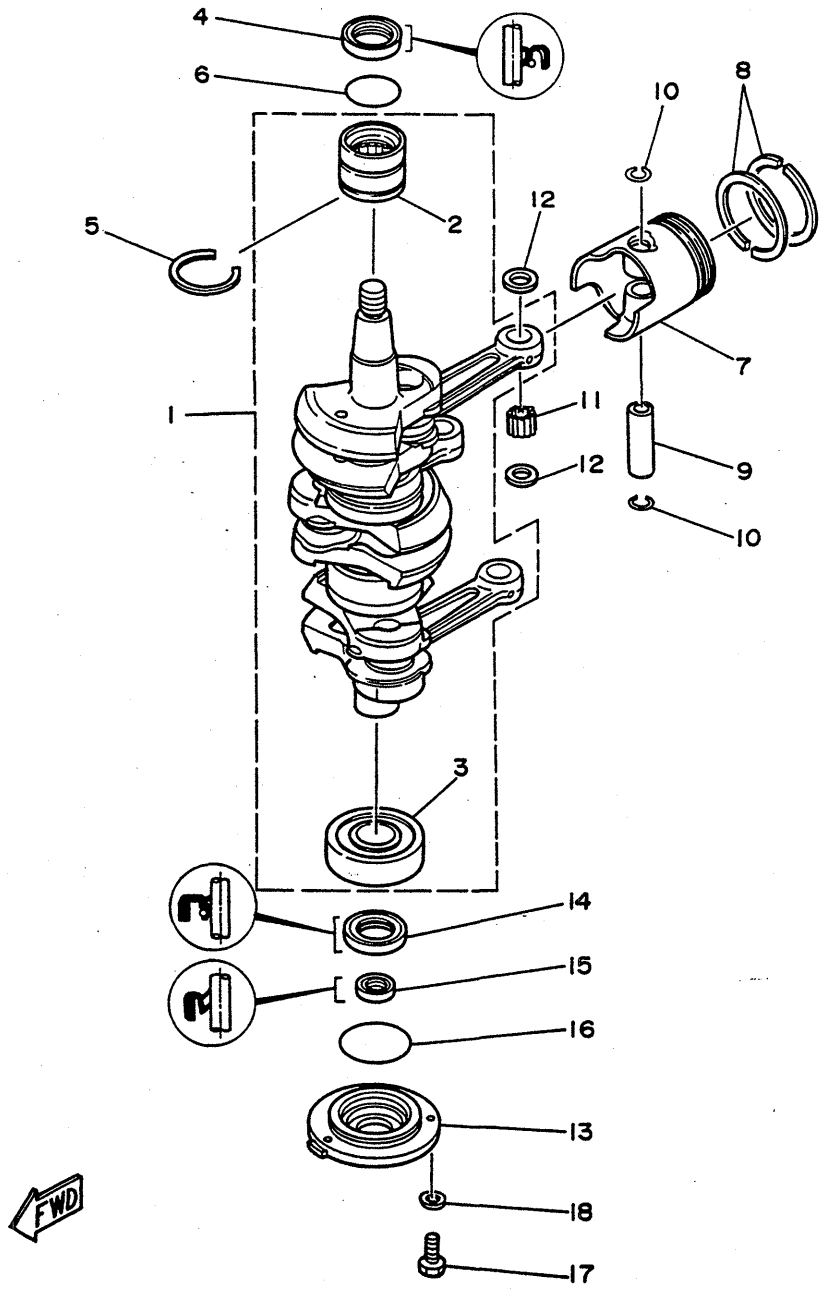


Fig. 2 CRANKSHAFT. PISTON

Ref.No.	Parts No.	Description	Q'ty	Ref.No.	Parts No.	Description	Q'ty
1	6H3-11400-01	CRANKSHAFT ASSY	1	9	6H3-11633-00	PIN, piston	3
2	93311-636U6	.BEARING, cylindrical	1	10	688-11634-10	CLIP, piston pin	6
3	93306-306V1	.BEARING	1	11	93603-18M09	PIN, dowel	84
4	93102-36M24	OIL SEAL	1	12	90201-20417	WASHER, plate	6
5	93440-49M04	CIRCLIP	1	13	6H3-15359-00-94	HOUSING, oil seal	1
6	93210-46M16	O-RING	1	14	93102-30M23	OIL SEAL	1
7	6J2-11631-02-96	PISTON (STD)	3	15	93106-18M01	OIL SEAL	1
	6J2-11635-02	PISTON (-0.25MM O/S)	3 AP	16	93210-65M50	O-RING	1
	6J2-11636-02	PISTON (-0.50MM O/S)	3 AP	17	97395-06020	BOLT	3
8	6J2-11610-02	PISTON RING SET (STD)	3	18	92990-06600	WASHER, plate	3
	6J2-11610-12	PISTON RING SET (-0.25MM O/S)	3 AP				
	6J2-11610-22	PISTON RING SET (-0.50MM O/S)	3 AP				

Fig. 3 INTAKE

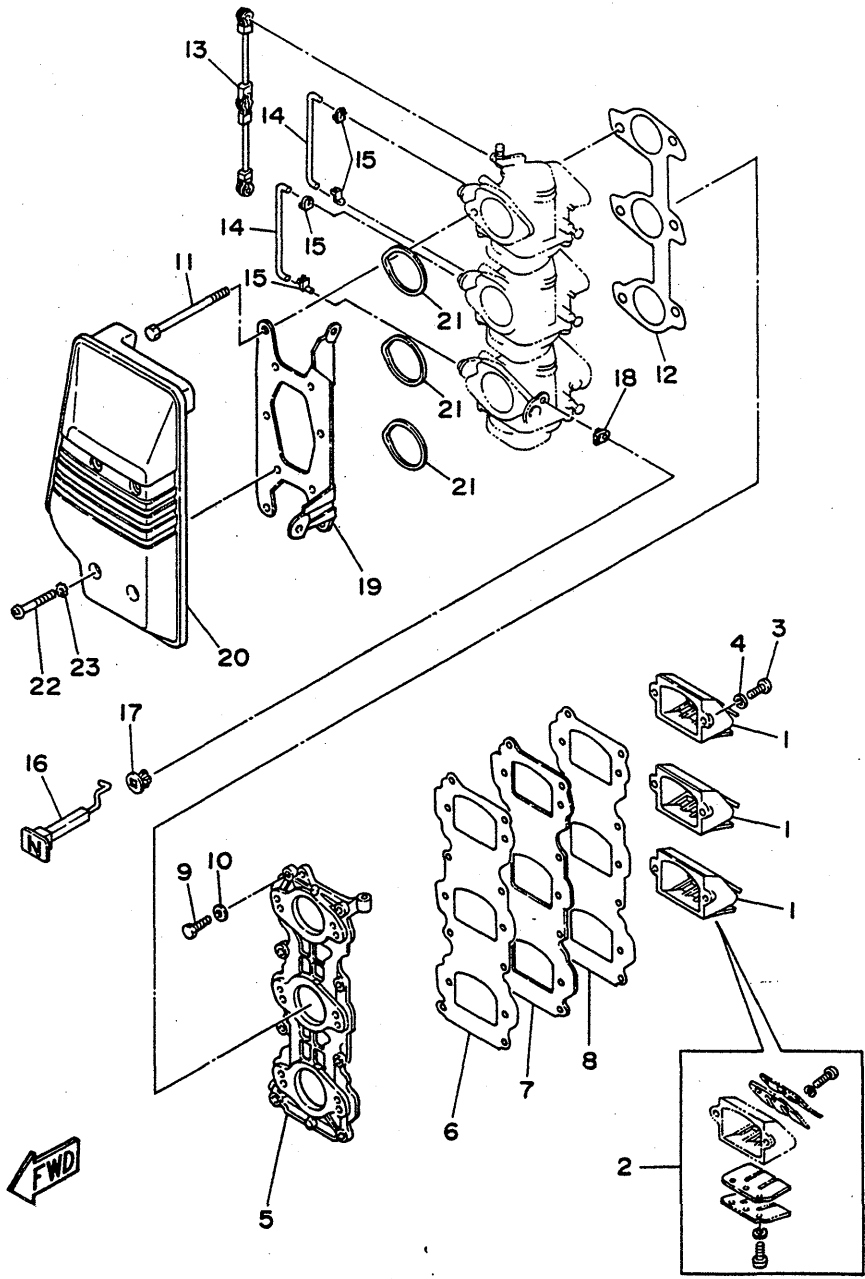


Fig. 3 INTAKE

Ref.No.	Parts No.	Description	Q'ty	Ref.No.	Parts No.	Description	Q'ty
1	6J2-13610-00	REED VALVE ASSY	3	13	6H3-41217-00	ROD, accel. lever	1
2	6J2-W0004-00	.REED SET	1	14	6H3-41257-00	ROD, choke 2	2
3	98580-05020	SCREW, pan head	6	15	661-41262-02	JOINT, choke lever	4
4	92990-05100	WASHER, spring	6	16	6H3-41271-00	KNOB, choke	1
5	6H3-13641-01-94	MANIFOLD 1	1	17	689-41273-00	GROMMET	1
6	6H3-13621-00	GASKET, valve seat	1	18	661-41262-02	JOINT, choke lever	1
7	6H3-13624-00-94	PLATE, reed valve	1	19	6H3-14413-00	STAY	1
8	6H3-13622-00	GASKET, valve seat	1	20	6H3-14440-00	SILENCER ASSY, intake	1
9	97313-06025	BOLT	8	21	6H3-14457-01	SEAL	3
10	92990-06600	WASHER, plate	8	22	92503-06045	SCREW, pan head	4
11	97313-06095	BOLT	6	23	90209-06M05	WASHER	4
12	6H3-14198-01	GASKET	1				

Fig. 4 CARBURETOR

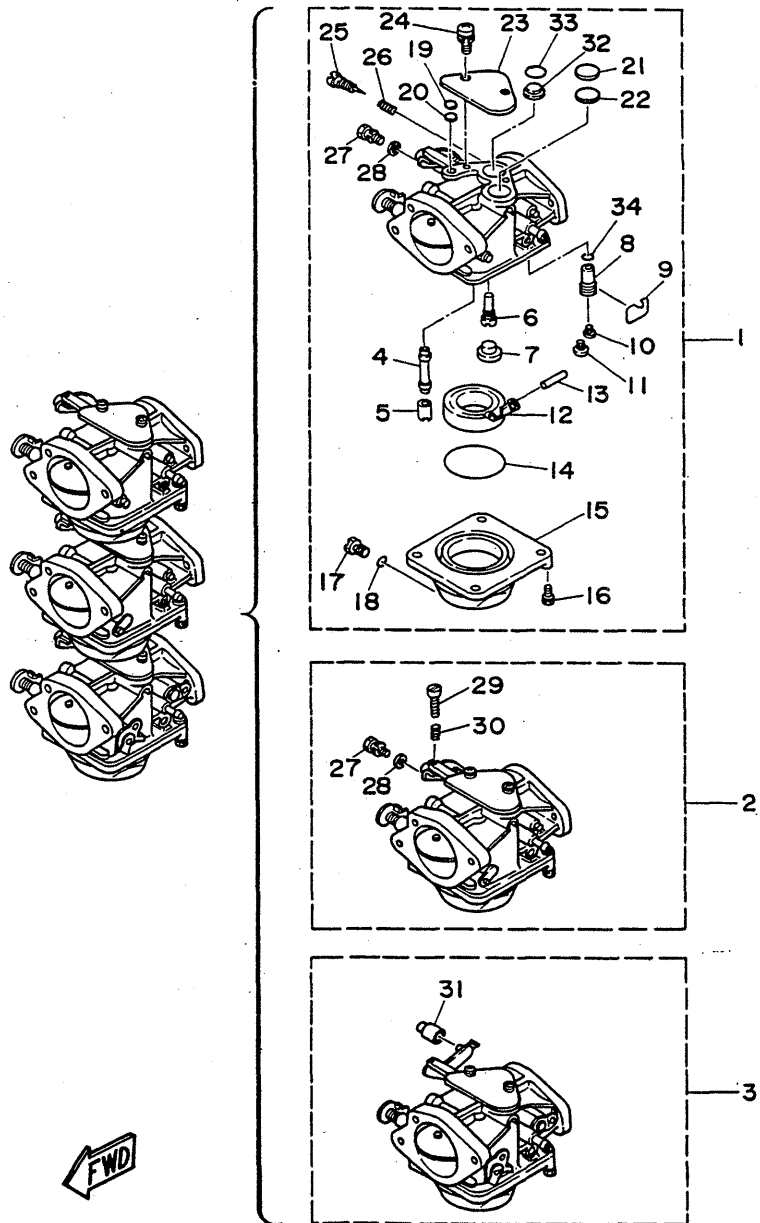


Fig. 4 CARBURETOR

Ref.No.	Parts No.	Description	Q'ty	Ref.No.	Parts No.	Description	Q'ty
1	6J2-14301-05	CARBURETOR ASSY 1	1	18	93210-04230	.O-RING	3
2	6J2-14302-05	CARBURETOR ASSY 2	1	19	663-14126-00	.GASKET	3
3	6J2-14303-05	CARBURETOR ASSY 3	1	20	663-14527-00	.PLATE	3
4	6H3-14947-07	.JET, needle	3	21	688-14126-00	.GASKET	3
5	676-14943-39	.JET, main (#160)	3	22	688-14527-00	.PLATE	3
6	6H3-14948-18	.JET (#78)	3	23	6H2-14527-01	.PLATE	3
7	676-14966-00	.CAP	3	24	97980-05310	.SCREW, with washer	6
8	6H3-14590-00	.NEEDLE VALVE ASSY	3	25	692-14923-00	.SCREW, pilot	3
9	663-14159-00	.CLIP	3	26	679-14555-00	.SPRING	3
10	676-14186-00	.PIN, float	3	27	663-14592-00	.SCREW (UPPER/CENTER)	2
11	98580-04008	.SCREW, pan head	3	28	90201-05652	.WASHER, plate (UPPER/CENTER)	2
12	661-14985-00	.FLOAT	3	29	663-14523-00	.SCREW, stop (CENTER)	1
13	688-14548-00	.PIN, float arm	3	30	90501-10326	.SPRING, compression (CENTER)	1
14	661-14984-00	.O-RING	3	31	6H2-14578-00	.COLLAR (LOWER)	1
15	6H2-14980-00	.BODY, float chamber	3	32	6H3-14578-00	.PLATE	3
16	97980-04114	.SCREW, with washer	12	33	93210-15M52	.O-RING	3
17	6H3-14992-00	.SCREW, drain	3	34	93210-04228	.O-RING	3

Fig. 6 FUEL 2

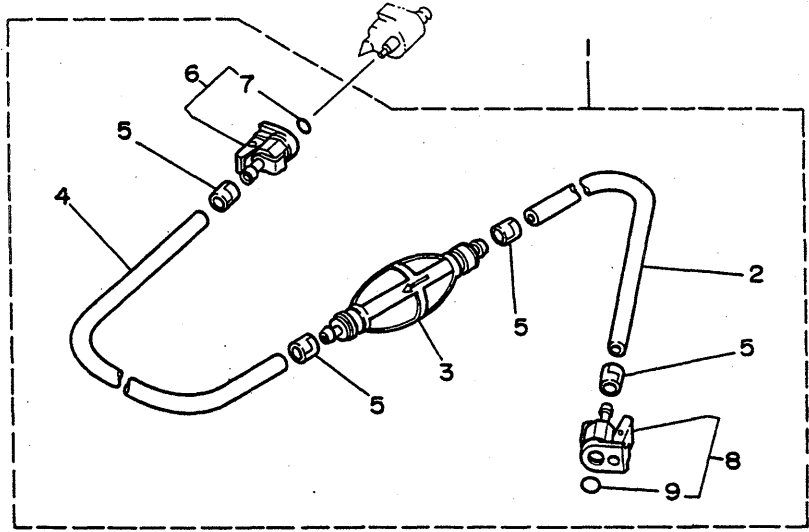
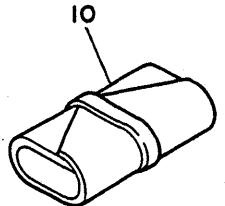


Fig. 6 FUEL 2

Ref.No.	Parts No.	Description	Q'ty	Ref.No.	Parts No.	Description	Q'ty
1	6Y1-24306-05	FUEL PIPE COMP. 1	1	7	93210-08287	..O-RING	1
# 2	90445-11M06	.HOSE (L2050)	1	8	6Y1-24305-01	.FUEL PIPE JOINT COMP. 2	1
3	6Y1-24360-02	.PRIMER PUMP ASSY	1	9	93210-08287	..O-RING	1
# 4	90445-11M05	.HOSE (L850)	1	10	656-W2810-01	TOOL KIT	1
5	650-24351-01	.BAND 1	4	11	6E0-28193-00-94	PLUG, water check	1
6	661-24305-00	.FUEL PIPE JOINT COMP. 2	1				

Also available in 30m rolls. (Parts No. 90890-56878)



FWD

Fig. 7 TOP COWLING

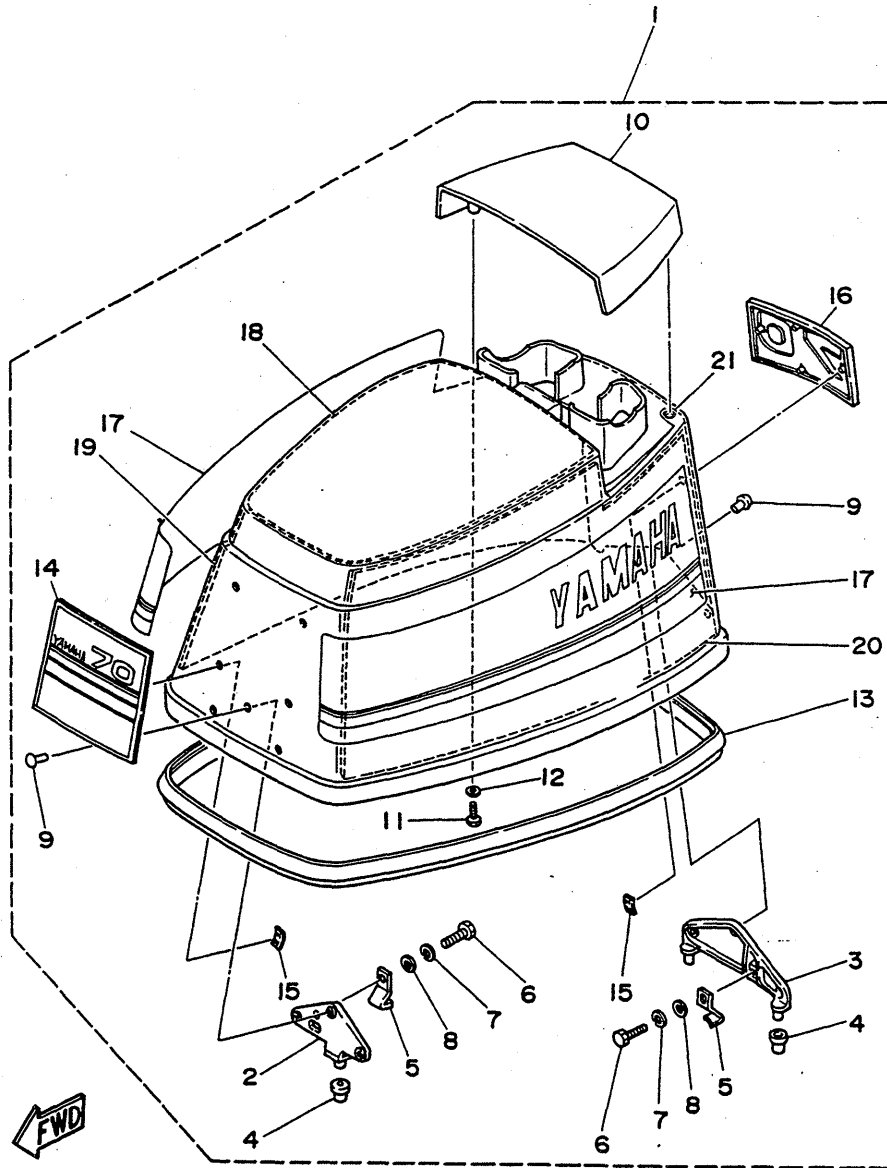


Fig. 7 TOP COWLING

Ref.No.	Parts No.	Description	Q'ty	Ref.No.	Parts No.	Description	Q'ty
1	6J2-42610-21-EJ	TOP COWLING ASSY	1	12	92990-06600	.WASHER, plate	4
2	6H3-42647-00-94	.HOLDER, clamp band	1	13	6H3-42615-00	.SEAL	1
3	6H3-42649-00-94	.HOLDER, clamp band	1	14	6J2-42686-01	.EMBLEM, front	1
4	663-42662-00	.DAMPER	3	15	90183-05M01	.NUT, spring	8
5	6H3-42652-00	.HOOK	2	16	6J2-42687-01	.EMBLEM, rear	1
6	97395-06016	.BOLT	2	17	6H3-W0070-22	.GRAPHIC SET	1
7	92990-06100	.WASHER, spring	2	18	689-W4266-20	.DAMPER, form	1
8	92990-06600	.WASHER, plate	2	19	689-W4266-40	.DAMPER, form	1
9	90266-06M02	.RIVET	6	20	689-W4266-40	.DAMPER, form	1
10	6H3-42613-00-EJ	.MOLDING, air duct	1	21	689-W4266-10	.DAMPER, form	1
11	97313-06016	.BOLT	4				

Fig. 8 BOTTOM COWLING

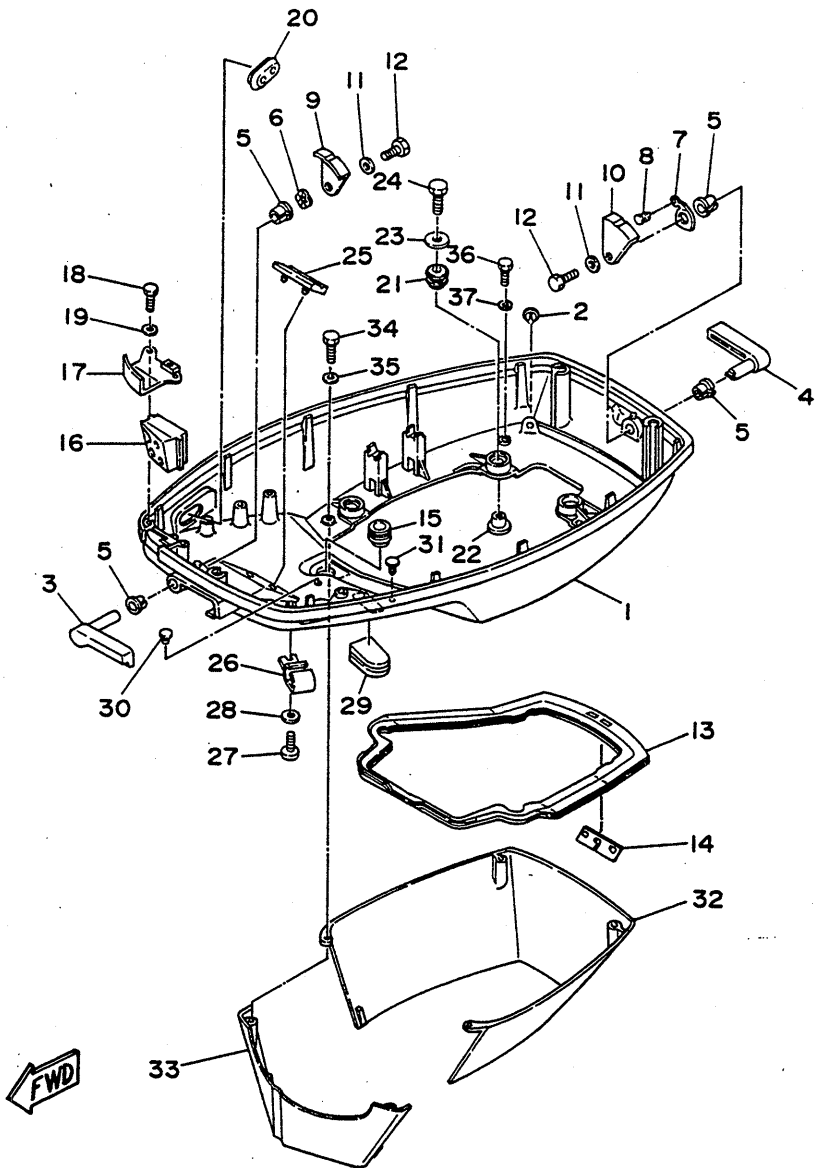


Fig. 8 BOTTOM COWLING

Ref.No.	Parts No.	Description	Q'ty	Ref.No.	Parts No.	Description	Q'ty
1	6H3-42711-01-EJ	COWLING, bottom	1	20	6H3-42727-00	GROMMET	1
2	6H3-44391-01	NIPPLE, hose	1	21	90480-09M12	GROMMET	4
3	6H3-42815-00-EJ	LEVER, clamp	1	22	90387-06M69	COLLAR	4
4	6H3-42817-00-EJ	LEVER, clamp	1	23	90201-06416	WASHER, plate	4
5	90386-13M38	BUSH	4	24	97313-06030	BOLT	4
6	90206-13M10	WASHER, wave	1	25	6H3-42768-00	DAMPER	1
7	6H3-42813-00	SPRING, clamp lever	1	26	6E5-24367-01	CLAMP, fuel pipe 2	1
8	90269-04M03	RIVET	1	27	90157-06M01	SCREW, pan head	1
9	6H3-42816-00	LEVER, clamp	1	28	92990-06600	WASHER, plate	1
10	6H3-42818-00	LEVER, clamp	1	29	6H4-42726-00	GROMMET	1
11	90201-06M02	WASHER, plate	2	30	703-82119-00	COVER, lead wire	2
12	97013-06012	BOLT	2	31	90338-05M03	PLUG	1
13	6H3-42716-02	RUBBER, seal 1	1	32	6H3-42741-00-EJ	APRON	1
14	6K5-42717-00	RUBBER, seal 2	1	33	6H3-42771-00-EJ	APRON	1
15	6E5-42724-00	GROMMET	1	34	97313-06025	BOLT	2
16	6H3-42725-00	GROMMET	1	35	92990-06600	WASHER, plate	2
17	6H3-42738-00-5B	PLATE, fitting	1	36	97313-06020	BOLT	2
18	97313-06016	BOLT	2	37	92990-06600	WASHER, plate	2
19	92990-06600	WASHER, plate	2				

Fig. 9 BRACKET 1

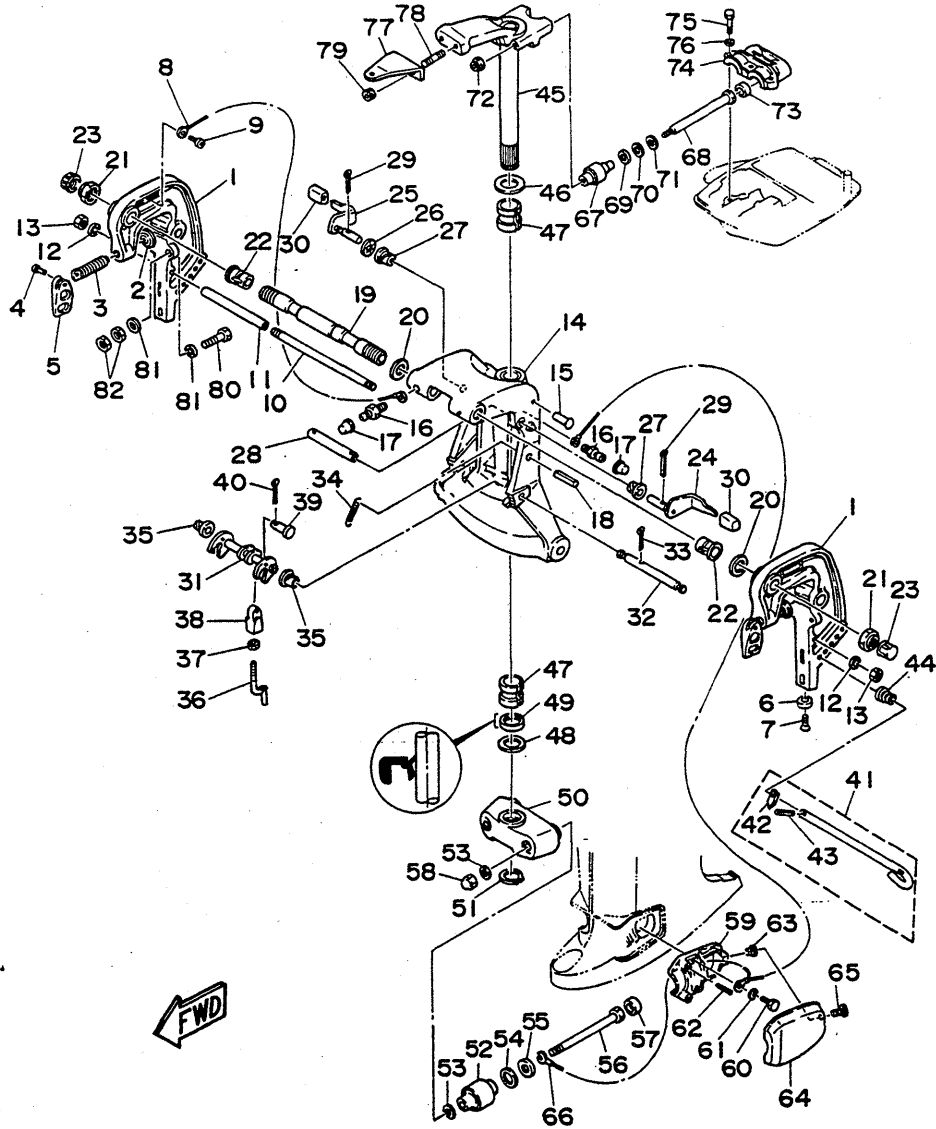


Fig. 9 BRACKET 1

Ref.No.	Parts No.	Description	Q'ty	Ref.No.	Parts No.	Description	Q'ty
1	696-43111-00-EJ	BRACKET, clamp	2	42	676-43165-00	.PLATE, tilt lock	1
2	648-43114-01	PAD, transom clamp	2	43	91690-30010	.PIN, spring	1
3	663-43116-00	SCREW, transom clamp	2	44	90502-10M04	SPRING, conical	1
4	90243-04007	PIN	2	45	6H3-42510-01-EJ	STEERING BRACKET ASSY	1
5	663-43118-00-EJ	HANDLE, transom clamp	2	46	90201-30M00	WASHER, plate	1
6	663-45251-00	ANODE	1	47	90386-30048	BUSH	2
7	92180-06025	SCREW, oval head	1	48	90201-31418	WASHER, plate	1
8	6E5-82148-00	WIRE, lead 4	1	49	93109-30M03	OIL SEAL	1
9	98580-06012	SCREW, pan head	1	50	6H3-44551-00-EJ	HOUSING, lower mount rubber	1
10	663-43123-00	BOLT, clamp bracket	1	51	93410-28M06	CIRCLIP	1
11	90387-10M03	COLLAR	1	52	688-44555-00-94	MOUNT DAMPER, lower side	2
12	92990-10600	WASHER, plate	2	53	90201-12M16	WASHER, plate	4
13	95380-10600	NUT	2	54	90202-25M04	WASHER, plate	2
14	696-43311-00-EJ	BRACKET, swivel	1	55	90201-13M19	WASHER, plate	2
15	90269-03010	RIVET	1	56	90109-12M21	BOLT	2
16	93700-06004	NIPPLE, grease	3	57	663-44575-00	DAMPER, lower mount rubber	2
17	663-45119-00	CAP, grease nipple	3	58	95380-12800	NUT, crown	2
18	91690-40040	PIN, spring	1	59	6H3-44552-01-94	HOUSING, lower mount rubber	2
19	696-43131-01	BOLT, clamp bracket	1	60	97395-08025	BOLT	4
20	90201-22428	WASHER, plate	2	61	92990-08100	WASHER, spring	4
21	90185-22043	NUT, self-locking	2	62	90501-14236	SPRING, compression	4
22	90386-22M15	BUSH	2	63	90179-06066	NUT	2
23	663-43145-00	CAP, clamp bracket	2	64	6H3-44553-00-EJ	COVER, lower mount	2
24	697-43181-01	LEVER, tilt stop	1	65	92380-06015	SCREW, cylinder head	2
25	697-43185-01	LEVER, tilt stop	1	66	696-82127-00	WIRE, lead 2	1
26	90206-10M08	WASHER, wave	1	67	688-44514-00-94	MOUNT DAMPER, upper side	2
27	90386-10045	BUSH	2	68	90101-10M49	BOLT	2
28	90387-10269	COLLAR	1	69	90201-20M21	WASHER, plate	2
29	91490-30030	PIN, cotter	2	70	90202-20M06	WASHER, plate	2
30	663-43318-00	COVER	2	71	90201-11M22	WASHER, plate	2
31	696-43610-00	TILT LOCK ASSY	1	72	90185-10051	NUT, self-locking	2
32	696-43611-00	SHAFT, tilt lock	1	73	663-44575-00	DAMPER, lower mount rubber	2
33	91490-25030	PIN, cotter	1	74	688-44511-00-94	COVER, upper mount	1
34	90506-12078	SPRING, tension	1	75	97090-08035	BOLT	3
35	90386-10045	BUSH	2	76	92990-08100	WASHER, spring	3
36	663-43616-02	ROD, tilt lock	1	77	688-48511-00-EJ	HOOK, steering (Ball Post Type)	1
37	95380-08600	NUT	1	78	90116-10175	BOLT, stud	2
38	663-43653-00	NUT, connection	1	79	90185-10051	NUT, self-locking	2
39	91590-08030	PIN, clevis	1	80	90101-10M58	BOLT	4
40	91490-20015	PIN, cotter	1	81	92995-10600	WASHER	8
41	676-43160-02	TILT ROD ASSY	1	82	95380-10600	NUT	8

Fig. 10 CONTROL

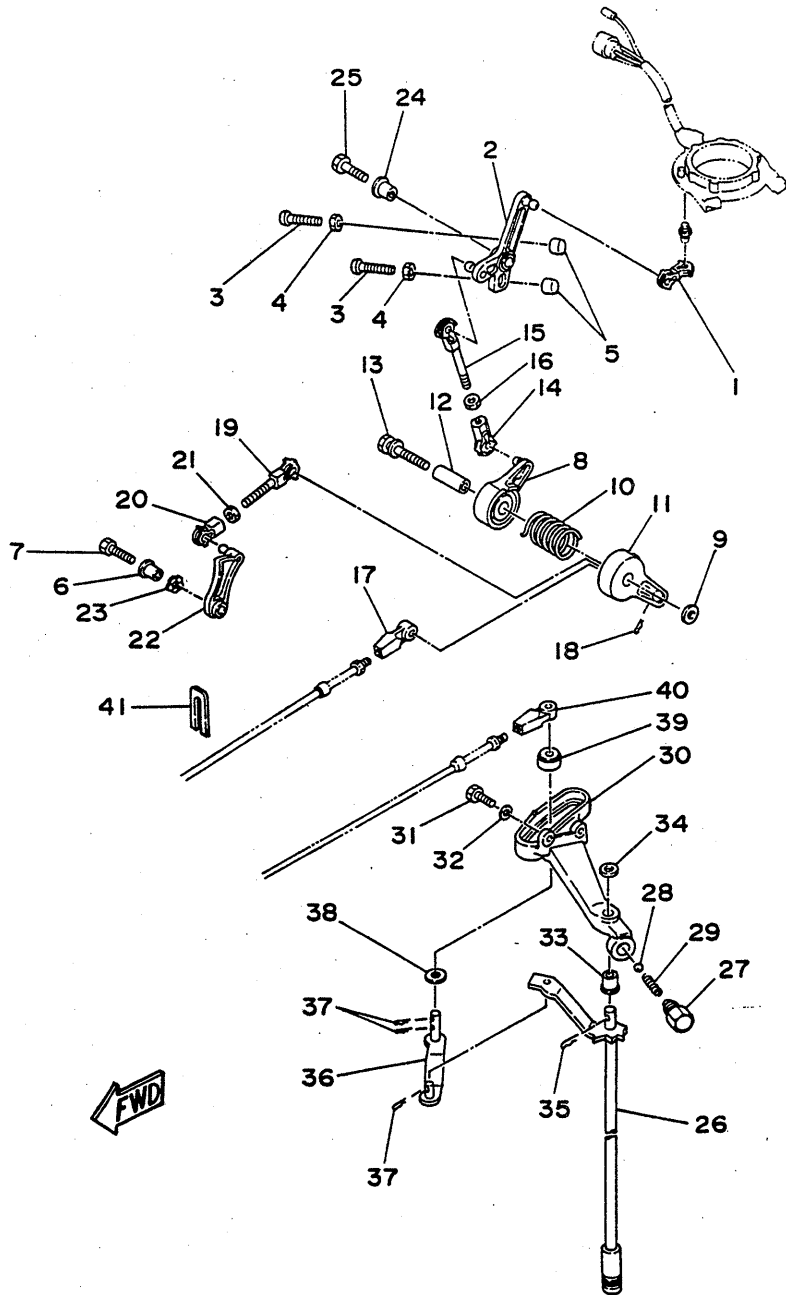


Fig. 10 CONTROL

Ref.No.	Parts No.	Description	Q'ty	Ref.No.	Parts No.	Description	Q'ty
1	6H3-41238-00	JOINT, link	1	22	6H3-41213-01	CAM, accel.	1
2	6H3-41631-00	LEVER, magneto control	1	23	90206-10M04	WASHER, wave	1
3	90157-06M00	SCREW, pan head	2	24	90387-06M60	COLLAR	1
4	95303-06600	NUT	2	25	97313-06025	BOLT	1
5	688-44194-00	CAP	2	26	6J2-44120-00	HANDLE GEAR SHIFT ASSY	1
6	90387-06M60	COLLAR	1	27	648-42715-00	BUSHING	1
7	97395-06025	BOLT	1	28	93501-04M02	BALL	1
8	6H3-41632-00	LEVER, magneto control	1	29	90501-12082	SPRING, compression	1
9	90201-06M31	WASHER, plate	1	30	6J2-44117-01-94	BRACKET	1
10	90508-29M19	SPRING, torsion	1	31	97313-06020	BOLT	2
11	6H3-41633-00	LEVER, magneto control	1	32	92990-06600	WASHER, plate	2
12	90387-06M59	COLLAR	1	33	90386-08M06	BUSH	1
13	90119-06M66	BOLT, with washer	1	34	92990-08200	WASHER, plain	1
14	6H1-41237-00	JOINT, link	1	35	91490-20015	PIN, cotter	1
15	679-41636-00	ROD, magneto control	1	36	6H3-44121-00	LEVER, shift rod	1
16	95380-05600	NUT	1	37	90468-18008	CLIP	3
17	663-48344-00	CABLE END, remote control	1	38	90202-07M07	WASHER, plate	1
18	90468-18008	CLIP	1	39	688-44122-00	BUSHING, shift rod lever	1
19	682-41237-50	JOINT, link	1	40	663-48344-00	CABLE END, remote control	1
20	6H1-41237-00	JOINT, link	1	41	6H3-48538-00	CLAMP, cable l	1
21	95380-05600	NUT	1				

Fig. 11 UPPER CASING

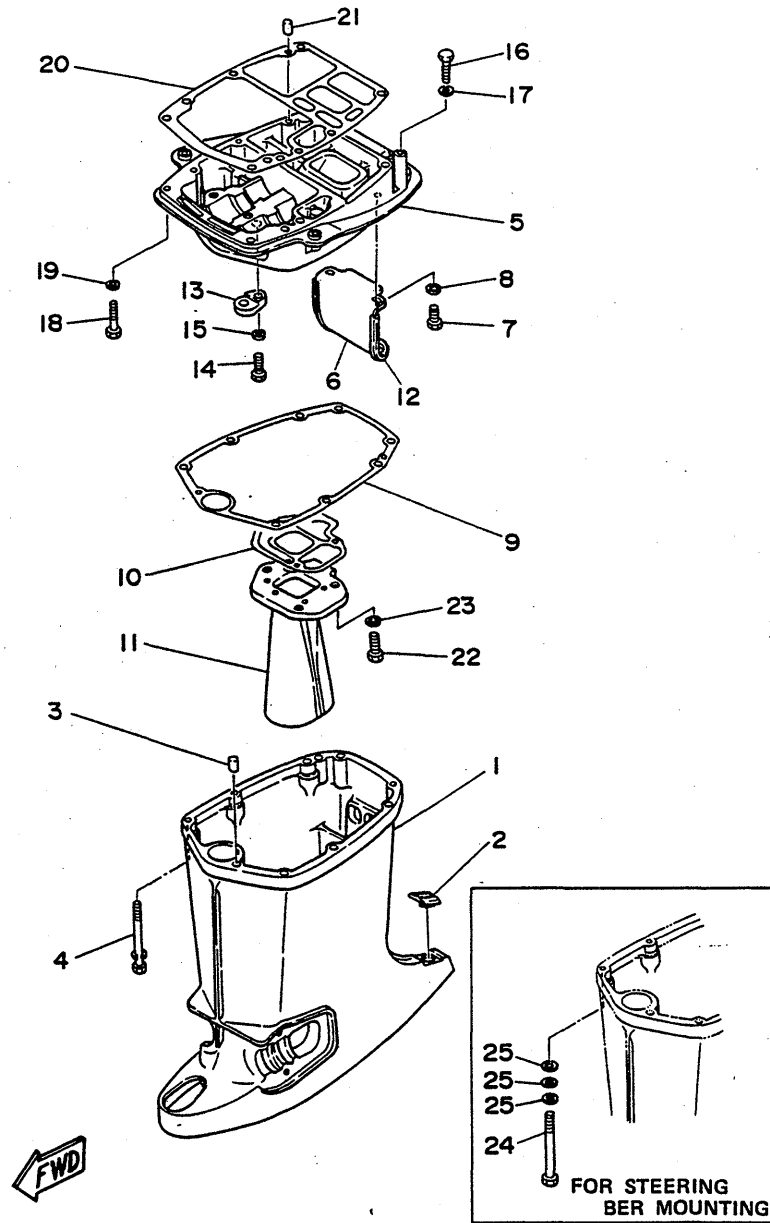


Fig. 11 UPPER CASING

Ref.No.	Parts No.	Description	Q'ty	Ref.No.	Parts No.	Description	Q'ty
1	6J2-45111-00-EJ	CASING, upper	1	14	97395-08020	BOLT	1
2	6H3-45155-00	CAP	1	15	92990-08100	WASHER, spring	1
3	93606-12019	PIN, dowel	2	16	97395-08030	BOLT	2
4	90101-08M85	BOLT	6	17	92990-08100	WASHER, spring	2
5	6J2-41137-00-94	GUIDE, exhaust	1	18	97090-08035	BOLT	2
6	6J2-14793-00	PLATE, muffler	1	19	92990-08100	WASHER, spring	2
7	97375-08015	BOLT	2	20	6H3-45113-00	GASKET, upper casing	1
8	92990-08100	WASHER, spring	2	21	93606-12019	PIN, dowel	2
9	6J2-45114-00	GASKET, upper casing	1	22	97395-08025	BOLT	3
10	6H3-41134-00	GASKET, exhaust manifold	1	23	92990-08100	WASHER, spring	3
11	6J2-41131-01	MANIFOLD, ext. 1	1	24	90101-08M13	BOLT (For Steering Ber Mounting)	6 AP
12	6J2-45127-00	SEAL	1	25	92990-08600	WASHER, plate (For Steering Ber Mounting)	18 AP
13	6J2-44328-00	PLATE	1				

Fig. 12 LOWER CASING. DRIVE I

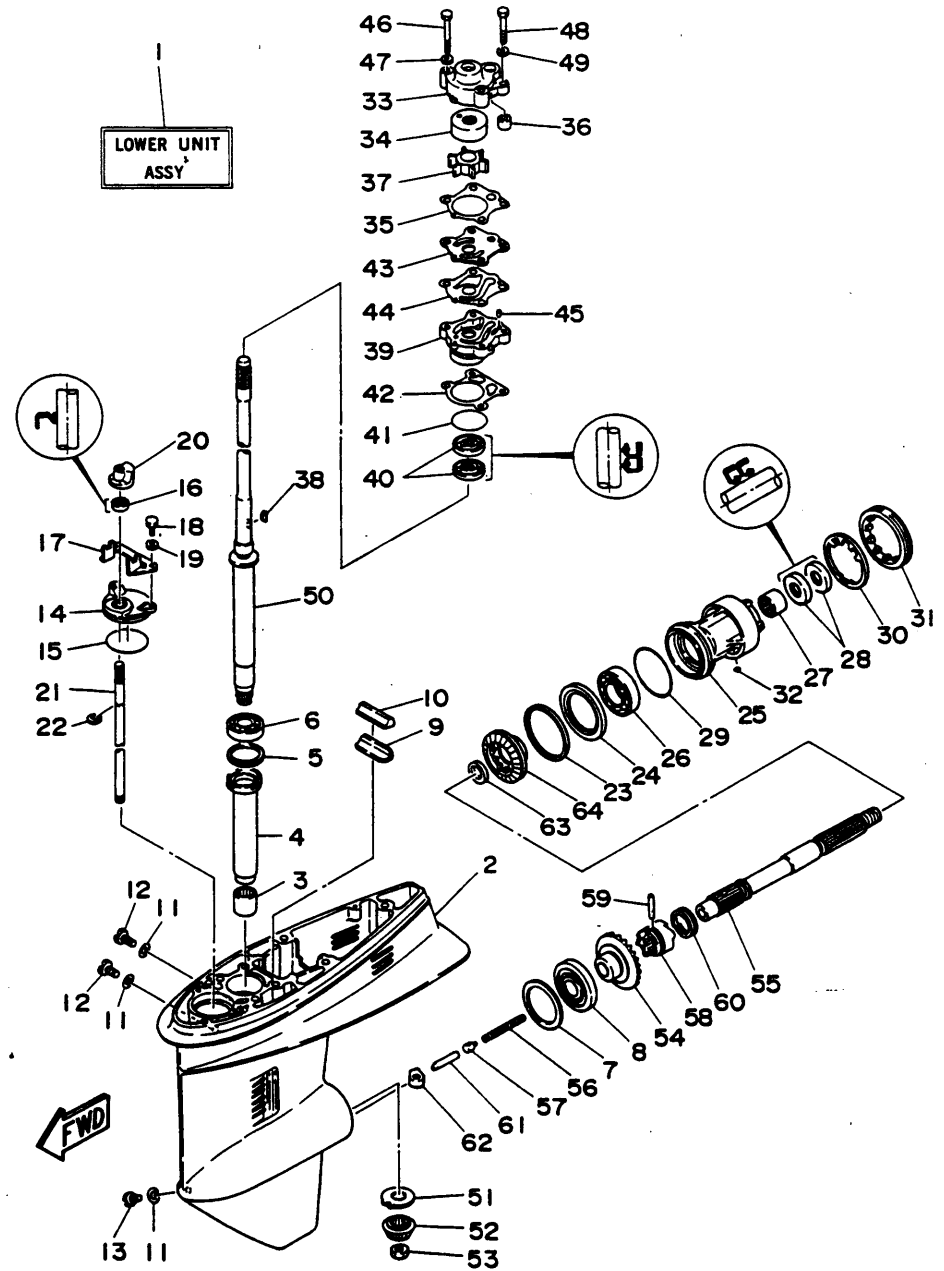


Fig. 12 LOWER CASING. DRIVE I

No.	Parts No.	Description	Q'ty	Ref.No.	Parts No.	Description	Q'ty
	J2-45300-00-EJ	LOWER UNIT ASSY (Ref.No. 2 to 64)	1	24	663-45576-00	WASHER, thrust	1
	J2-45311-00-EJ	CASING, lower	1	25	663-45331-00-94	HOUSING, bearing	1
	3315-322V2	BEARING, cylindrical	1	26	93306-00702	BEARING	1
	98-45536-00	SLEEVE, drive shaft	1	27	93317-22204	BEARING, cylindrical	1
	663-45587-01-10	SHIM (T:0.10MM)	1 UR	28	93101-22067	OIL SEAL	2
	663-45587-01-12	SHIM (T:0.12MM)	1 UR	29	93210-66M98	O-RING	1
	663-45587-01-15	SHIM (T:0.15MM)	1 UR	30	90214-48M03	WASHER, claw	1
	663-45587-01-18	SHIM (T:0.18MM)	1 UR	31	697-45384-00	NUT	1
	663-45587-01-30	SHIM (T:0.30MM)	1 UR	32	90282-04010	KEY, straight	1
	663-45587-01-40	SHIM (T:0.40MM)	1 UR	33	663-44311-02	HOUSING, water pump	1
	663-45587-01-50	SHIM (T:0.50MM)	1 UR	34	663-44322-00	INSERT, cartridge	1
	93332-00023	BEARING	1	35	663-44315-00	GASKET, water pump	1
	663-45567-01-10	SHIM (T:0.10MM)	1 UR	36	663-44366-00	DAMPER, water seal	1
	663-45567-01-12	SHIM (T:0.12MM)	1 UR	37	663-44352-00	IMPELLER	1
	663-45567-01-15	SHIM (T:0.15MM)	1 UR	38	90280-03M03	KEY, woodruff	1
	663-45567-01-18	SHIM (T:0.18MM)	1 UR	39	663-44341-00-94	HOUSING, water pump	1
	663-45567-01-30	SHIM (T:0.30MM)	1 UR	40	93101-23070	OIL SEAL	2
	663-45567-01-40	SHIM (T:0.40MM)	1 UR	41	93210-41042	O-RING	1
	663-45567-01-50	SHIM (T:0.50MM)	1 UR	42	663-44316-00	GASKET, water pump	1
	93332-00003	BEARING	1	43	663-44323-00	OUTER PLATE, cartridge	1
	663-45376-00-94	GUIDE, seal damper	1	44	663-44324-00	GASKET, cartridge	1
	663-45375-00	DAMPER, seal	1	45	93604-08062	PIN, dowel	2
	90430-08020	GASKET	3	46	97395-08055	BOLT	2
	90340-08M04	PLUG, straight screw	2	47	92990-08600	WASHER, plate	2
	688-45341-00	PLUG, drain	1	48	97395-08045	BOLT	2
	663-45321-00	PLATE	1	49	92990-08600	WASHER, plate	2
	93210-49046	O-RING	1	50	632-45501-00	DRIVE SHAFT COMP.	1
	93106-09014	OIL SEAL	1	51	663-45552-00	BEARING, plain	1
	662-43627-00	STOPPER	1	52	675-45551-00	PINION	1
	97395-06016	BOLT	2	53	90170-12138	NUT	1
	92990-06600	WASHER, plate	2	54	675-45560-00	GEAR	1
	663-44155-01	CAM, reverse rod	1	55	697-45611-00	SHAFT, propeller	1
	663-44144-01	ROD, shift	1	56	90501-16233	SPRING, compression	1
	99001-08600	CIRCLIP	1	57	663-45634-00	SLIDE, shift	1
	663-45577-01-10	SHIM (T:0.10MM)	1 UR	58	663-45631-01	CLUTCH, dog	1
	663-45577-01-12	SHIM (T:0.12MM)	1 UR	59	90250-06023	PIN, straight	1
	663-45577-01-15	SHIM (T:0.15MM)	1 UR	60	663-45633-00	RING, cross pin	1
	663-45577-01-18	SHIM (T:0.18MM)	1 UR	61	688-45635-00	PLUNGER, shift	1
	663-45577-01-30	SHIM (T:0.30MM)	1 UR	62	663-44151-00	CAM, shift	1
	663-45577-01-40	SHIM (T:0.40MM)	1 UR	63	90201-22429	WASHER, plate	1
	663-45577-01-50	SHIM (T:0.50MM)	1 UR	64	675-45571-01	GEAR	1

Fig. 13 LOWER CASING. DRIVE 2

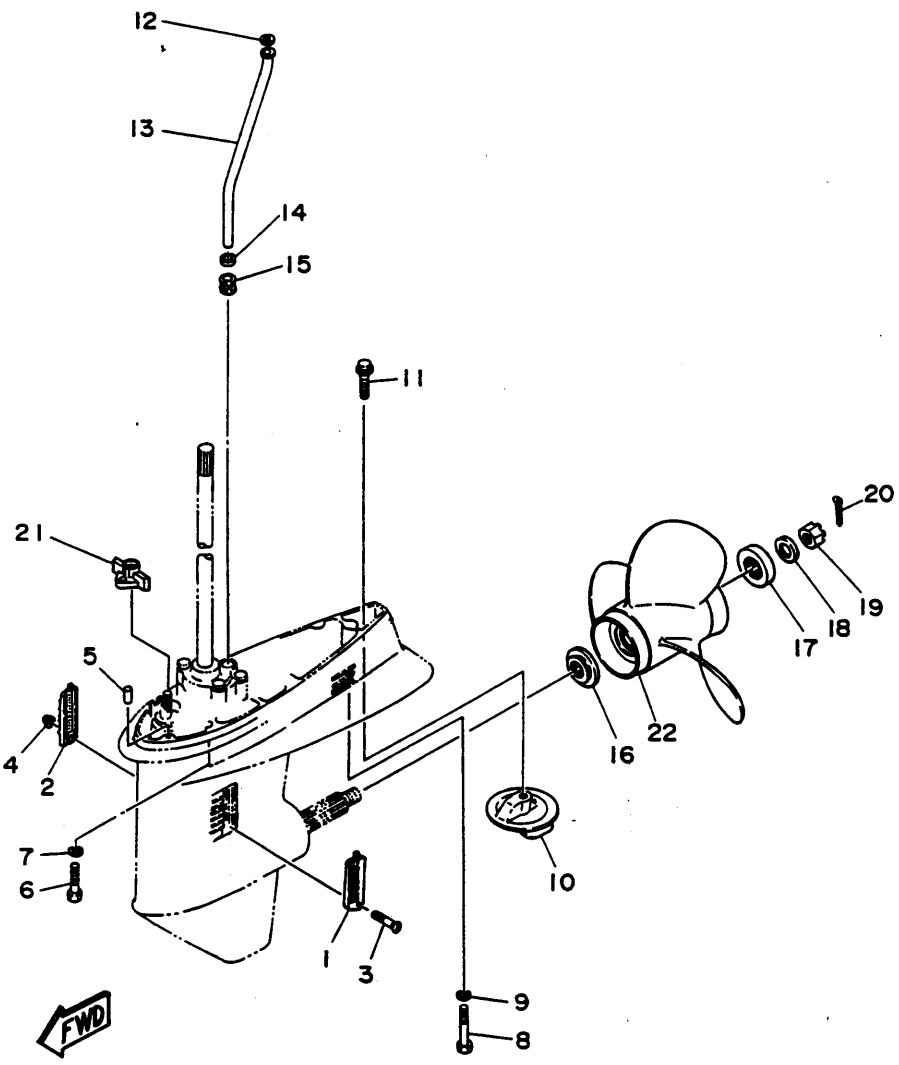


Fig. 13 LOWER CASING. DRIVE 2

Ref.No.	Parts No.	Description	Q'ty	Ref.No.	Parts No.	Description	Q'ty
1	688-45214-02	COVER, water inlet	1	12	90202-12060	WASHER, plate	1
2	688-45215-02	COVER, water inlet	1	13	6H3-44361-00	TUBE, water	1
3	98680-05540	SCREW, oval head	1	14	90430-12072	GASKET	1
4	90185-05002	NUT, self-locking	1	15	663-44367-00	DAMPER, water seal	1
5	93606-12019	PIN, dowel	2	16	663-45987-02	SPACER	1
6	97395-10040	BOLT	4	17	670-45997-02	SPACER	1
7	92990-10100	WASHER, spring	4	18	92990-16200	WASHER, plain	1
8	97395-08060	BOLT	1	19	90171-16011	NUT, castle	1
9	92990-08100	WASHER, spring	1	20	91490-40030	PIN, cotter	1
10	679-45371-00	TAB-TRIM	1	21	6J2-43662-00	GUIDE, reverse rod	1
11	90105-10400	BOLT, washer based	1	22	6J2-45970-00	PROPELLER (3X11"X21"-G)	1 UR
					6J2-45972-00	PROPELLER (3X11"X19"-G)	1 UR

Fig. 14 MAGNETO

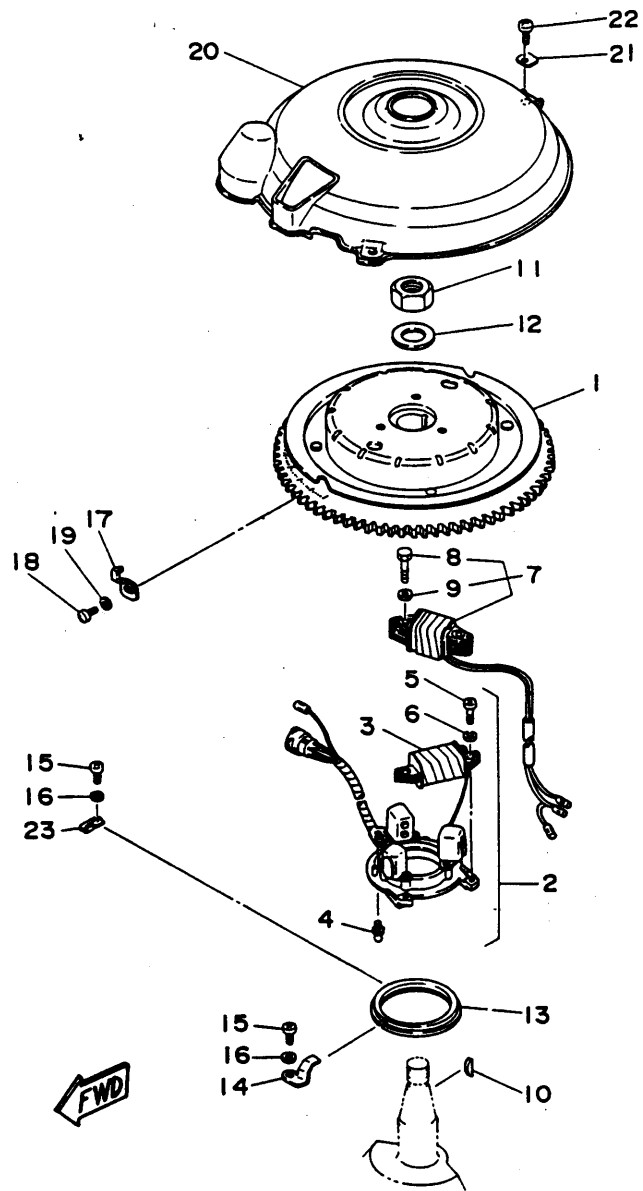


Fig. 14 MAGNETO

Ref.No.	Parts No.	Description	Q'ty	Ref.No.	Parts No.	Description	Q'ty
1	6K5-85550-A0	ROTOR ASSY	1	13	6H3-41611-00	RETAINER, magneto base	1
2	6H3-85510-A0	STATOR ASSY	1	14	6H3-41612-00	RETAINER, magneto base	2
3	6H3-85520-00	.COIL, charge	1	15	98580-06012	SCREW, pan head	3
4	663-85518-00	.JOINT, ball	1	16	92990-06600	WASHER, plate	3
5	98501-05016	.SCREW, pan head	2	17	6E5-81332-00	PLATE, timing	1
6	92990-05100	.WASHER, spring	2	18	97803-06010	SCREW, pan head	1
7	6H3-81303-A0	LIGHTING COIL ASSY	1	19	92990-06600	WASHER, plate	1
8	97313-06030	.BOLT	2	20	6H3-81337-00	COVER, flywheel	1
9	92990-06600	.WASHER, plate	2	21	90209-06M04	WASHER	3
10	90280-05049	KEY, woodruff	1	22	92503-06015	SCREW, pan head	3
11	90170-20137	NUT	1	23	6H3-41612-10	RETAINER, magneto base	1
12	90201-21M18	WASHER, plate	1				

Fig. 15 STARTING MOTOR

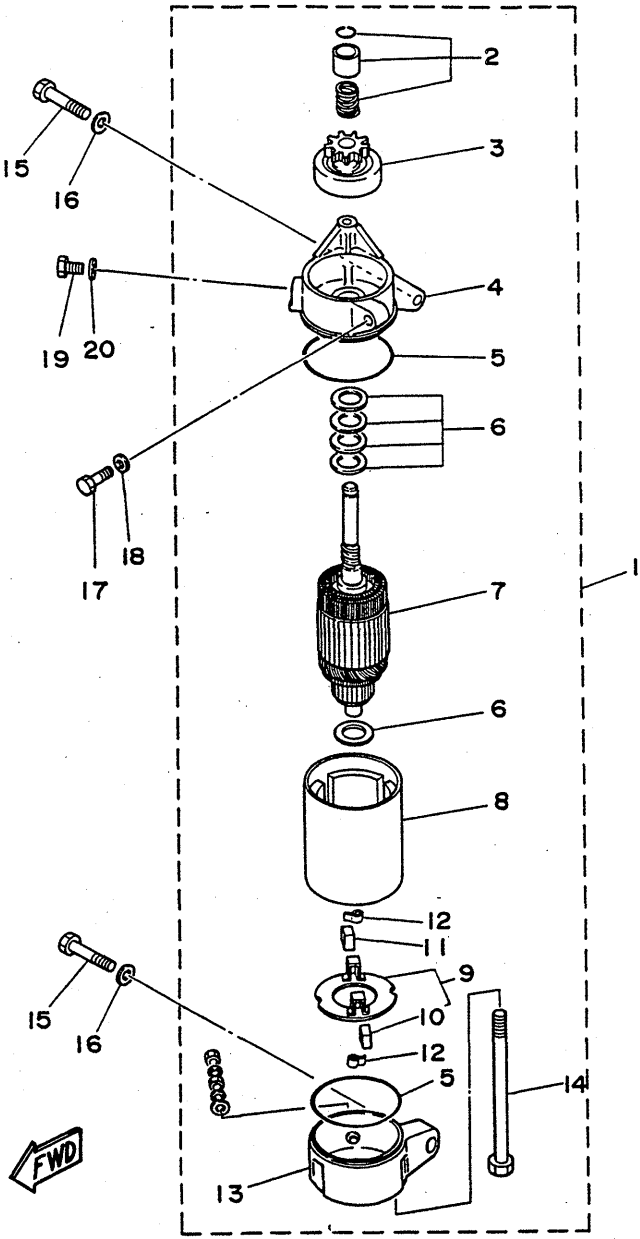


Fig. 15 STARTING MOTOR

Ref.No.	Parts No.	Description	Q'ty	Ref.No.	Parts No.	Description	Q'ty
1	6H3-81800-10	STARTING MOTOR ASSY	1	11	689-81811-11	.BRUSH 1	1
2	689-81857-11	.PINION STOPPER SET	1	12	689-81813-10	.SPRING, brush	2
3	6H3-81807-10	.GEAR ASSY, starting motor	1	13	6H3-81820-11	.REAR BRACKET ASSY	1
4	6H3-81830-10	.FRONT BRACKET ASSY	1	14	689-81826-10	.BOLT	2
5	689-81844-11	.GASKET	2	15	97313-08035	BOLT	2
6	689-81809-11	.WASHER KIT	1	16	92990-08600	WASHER, plate	2
7	689-81850-11	.ARMATURE ASSY	1	17	97313-06025	BOLT	1
8	6H3-81810-10	.STATOR ASSY	1	18	92990-06600	WASHER, plate	1
9	689-81840-11	.BRUSH HOLDER ASSY	1	19	97313-08016	BOLT	1
10	689-81812-11	..BRUSH 2	1	20	92990-08600	WASHER, plate	1

Fig. 16 ELECTRICAL I

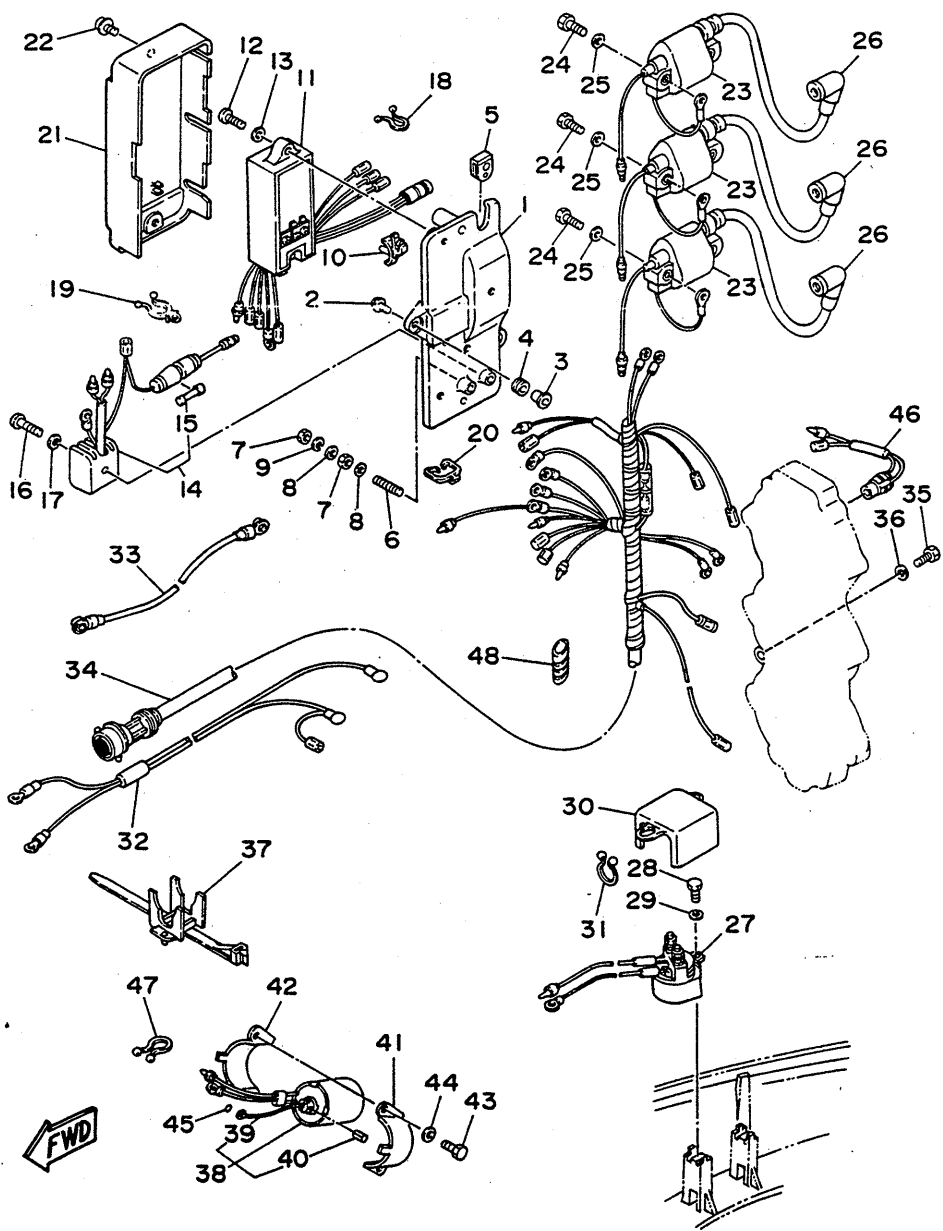


Fig. 16 ELECTRICAL I

Ref.No.	Parts No.	Description	Q'ty	Ref.No.	Parts No.	Description	Q'ty
1	6H3-85542-00-94	BRACKET	1	25	92990-06600	WASHER, plate	6
2	90105-06M14	BOLT, washer based	3	26	6G1-82370-20	PLUG CAP ASSY	3
3	90387-06M43	COLLAR	3	27	688-81950-10	RELAY ASSY	1
4	90480-13M24	GROMMET	3	28	97313-06016	BOLT	1
5	6H3-81922-00	GROMMET	1	29	92990-06600	WASHER, plate	1
6	90116-06M07	BOLT, stud	1	30	6H3-82164-00	CASE 2	1
7	95380-06700	NUT	2	31	90464-16039	CLAMP	1
8	92990-06200	WASHER, plain	2	32	6H3-82105-00	WIRE HARNESS	1
9	92990-06100	WASHER, spring	1	33	6H3-82117-00	WIRE, lead	1
10	90464-04M12	CLAMP	1	34	6H3-82590-01	WIRE HARNESS ASSY	1
11	6H3-85540-11	C.D.I. UNIT ASSY	1	35	97013-06012	BOLT	1
12	98580-06025	SCREW, pan head	2	36	92990-06600	WASHER, plate	1
13	92990-06600	WASHER, plate	2	37	688-82594-00	CLAMP	1
14	661-81970-61	RECTIFIER ASSY	1	38	6H3-86110-02	SOLENOID	1
15	661-82151-00	.FUSE	1	39	6H3-86116-00	.WIRE, pull	1
16	98503-05025	SCREW, pan head	1	40	91690-30010	.PIN, spring	1
17	92990-05600	WASHER, plate	1	41	6H3-86112-00	STAY, solenoid	1
18	90465-18147	CLAMP	1	42	6H3-86115-00	HOLDER, solenoid	1
19	90464-12M17	CLAMP	1	43	97313-06016	BOLT	2
20	90464-07M10	CLAMP	1	44	92990-06600	WASHER, plate	2
21	6H3-81916-00	COVER, terminal	1	45	93210-03261	O-RING	1
22	97985-06212	SCREW, with washer	2	46	688-82560-10	THERMO SWITCH ASSY	1
23	6H3-85570-10	IGNITION COIL ASSY	3	47	90465-18147	CLAMP	1
24	97313-06025	BOLT	6	48	90446-10M02	HOSE	1

Fig. 17 ELECTRICAL 2

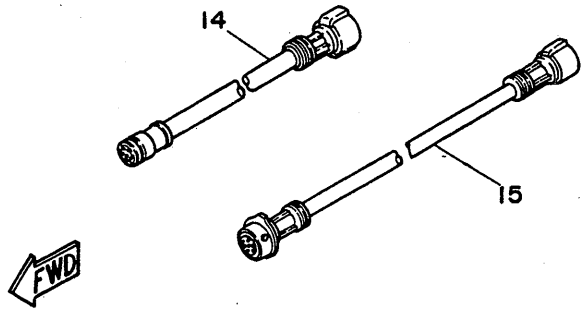
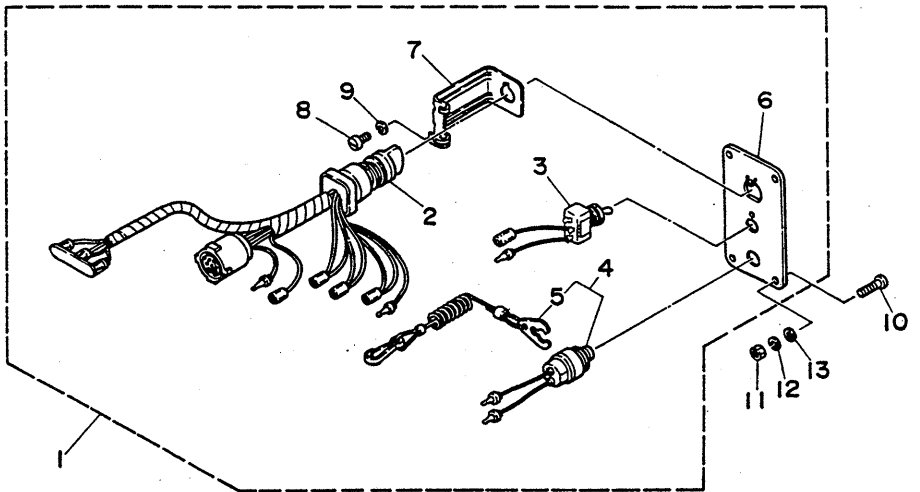


Fig. 17 ELECTRICAL 2

Ref.No.	Parts No.	Description	Q'ty	Ref.No.	Parts No.	Description	Q'ty
1	689-82570-15	PANEL SWITCH ASSY	1	9	92901-04100	.WASHER, spring	1
2	689-82510-00	.MAIN SWITCH ASSY	1	10	90149-05M05	SCREW	4
3	703-82574-00	.SWITCH, choke	1	11	95380-05600	NUT	4
4	688-82575-01	.ENGINE STOP SWITCH ASSY	1	12	92990-05100	WASHER, spring	4
5	682-82556-00	..STOPPER	1	13	92990-05600	WASHER, plate	4
6	689-82571-02	.PANEL, switch	1	14	688-82586-50	EXTENSION, wireharness (L:5m)(7P)	1
7	663-82581-01	.STAY, cord clamp	1	15	688-82586-11	EXTENSION, wireharness (L:2m)(7P)	1 UR
8	98303-04008	.SCREW, cylinder head	1		688-82586-31	EXTENSION, wireharness (L:3m)(7P)	1 UR

Fig. 18 OPTIONAL PARTS I

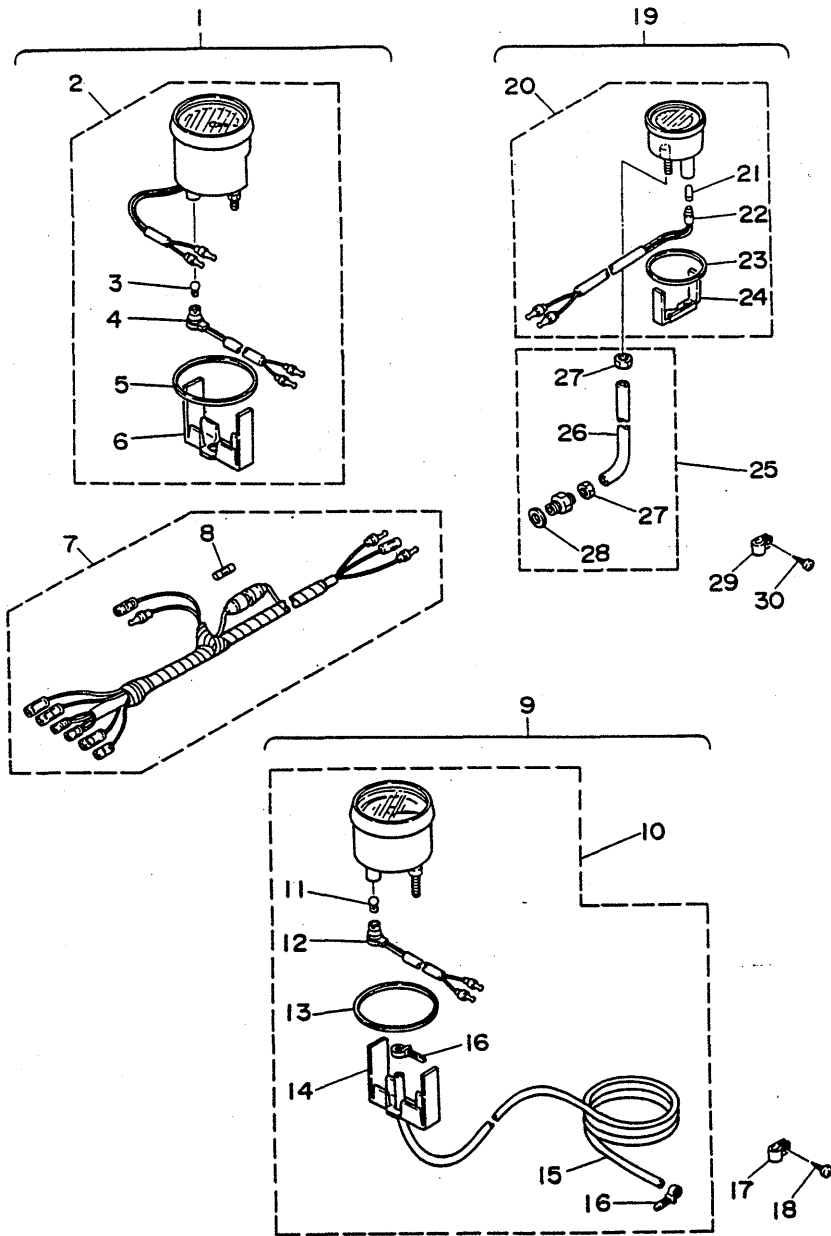


Fig. 18 OPTIONAL PARTS I

Ref.No.	Parts No.	Description	Q'ty	Ref.No.	Parts No.	Description	Q'ty
1	6Y5-W0080-12	TACHOMETER KIT	1	16	90465-11M10	..CLAMP	2
2	6Y5-83540-13	..TACHOMETER ASSY	1	17	90601-31402	..NYLON CLIP 1	5
3	6Y5-83516-00	..BULB	1	18	97780-40116	..SCREW, tapping	5
4	6Y5-83536-40	..SOCKET, meter	1	19	6Y5-W0088-00	WATER PRESSURE METER KIT	1
5	6Y5-83523-00	..DAMPER	1	20	6Y5-83660-00	..WATER PRESSURE METER ASSY	1
6	6Y5-83514-00	..PLATE, fitting	1	21	6Y5-83518-00	..BULB, meter	1
7	6Y5-83553-00	..WIRE, lead	1	22	6Y5-83536-00	..SOCKET, meter	1
8	1E6-82151-00	..FUSE (10A)	1	23	688-83664-00	..DAMPER	1
9	6Y5-W0081-30	SPEEDOMETER KIT	1	24	688-83665-00	..PLATE, fitting	1
10	6Y5-83510-30	..SPEEDOMETER ASSY	1	25	688-83667-00	..SENDER	1
11	688-83516-00	..BULB	1	26	688-83666-00	..TUBE	1
12	6Y5-83536-10	..SOCKET, meter	1	27	663-83668-00	..NUT, nipple	2
13	6Y5-83523-00	..DAMPER	1	28	90430-14115	..GASKET	1
14	6Y5-83514-00	..PLATE, fitting	1	29	90601-31402	..NYLON CLIP 1	5
15	688-83557-00	..TUBE	1	30	97780-40116	..SCREW, tapping	5

Fig. 19 OPTIONAL PARTS 2

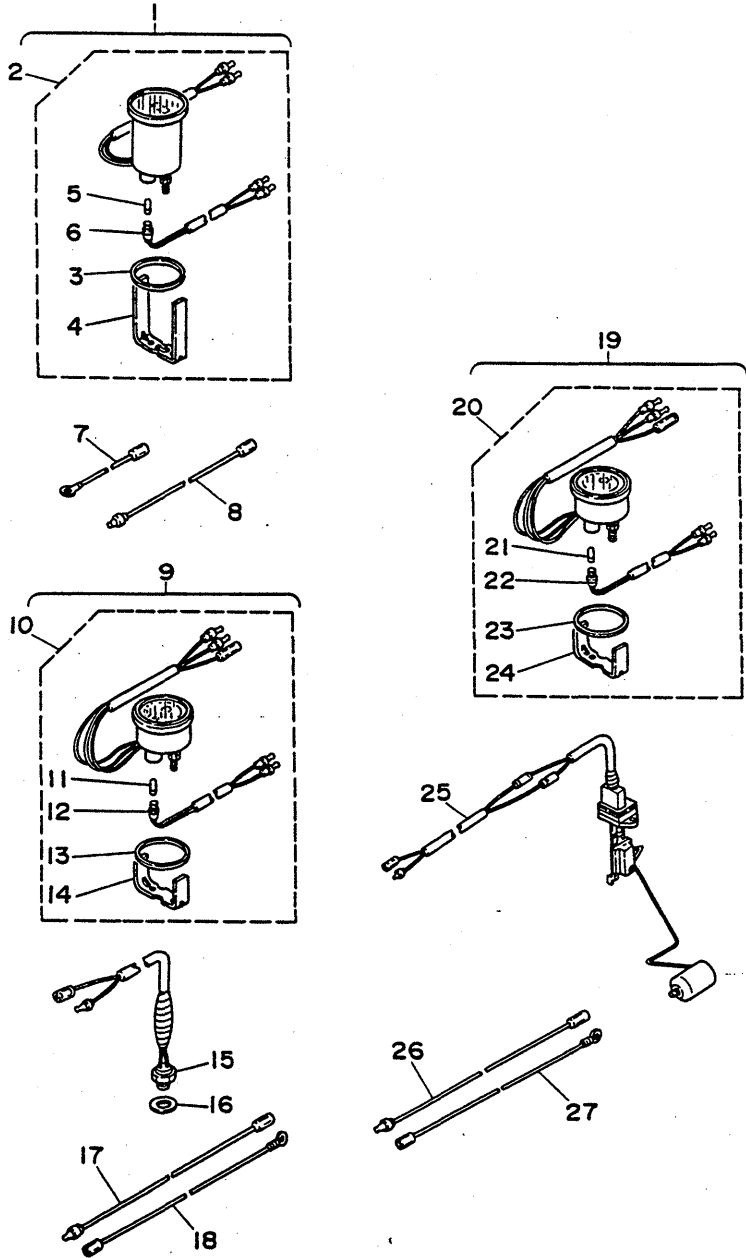


Fig. 19 OPTIONAL PARTS 2

Ref.No.	Parts No.	Description	Q'ty	Ref.No.	Parts No.	Description	Q'ty
1	6Y5-W0088-31	.. HOUR METER KIT	1	15	688-83591-00	.. THERMO UNIT	1
2	6Y5-83504-01	.. HOUR METER ASSY	1	16	90430-14115	.. GASKET	1
3	688-83664-00	.. DAMPER	1	17	663-83553-Y0	.. WIRE, lead	1
4	6Y5-83577-00	.. PLATE, fitting	1	18	663-83553-A0	.. WIRE, lead	1
5	6Y5-83518-00	.. BULB, meter	1	19	6Y5-W0088-20	FUEL METER KIT	1
6	6Y5-83536-00	.. SOCKET, meter	1	20	6Y5-85750-00	FUEL METER ASSY	1
7	663-83553-A0	.. WIRE, lead	1	21	6Y5-83518-00	.. BULB, meter	1
8	663-83553-Y0	.. WIRE, lead	1	22	6Y5-83536-00	.. SOCKET, meter	1
9	6Y5-W0088-10	.. WATER TEMP. METER KIT	1	23	688-83664-00	.. DAMPER	1
10	6Y5-83590-00	.. WATER TEMPERATURE ASSY	1	24	6Y5-83544-00	.. PLATE, fitting	1
11	6Y5-83518-00	.. BULB, meter	1	25	688-85752-01	.. SENDER UNIT ASSY, fuel meter	1
12	6Y5-83536-00	.. SOCKET, meter	1	26	663-83553-Y0	.. WIRE, lead	1
13	688-83664-00	.. DAMPER	1	27	663-83553-A0	.. WIRE, lead	1
14	6Y5-83544-00	.. PLATE, fitting	1				

Fig. 20 OPTIONAL PARTS 3

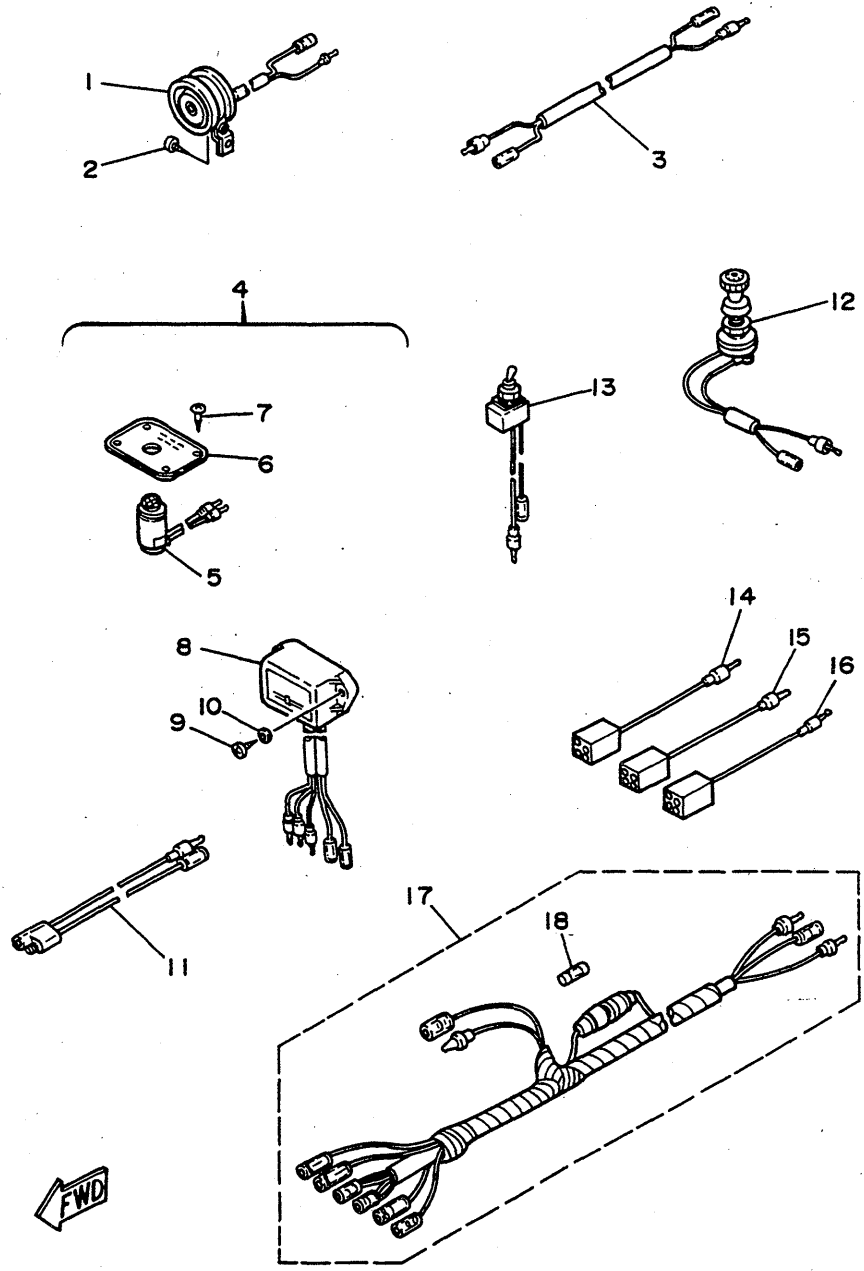


Fig. 20 OPTIONAL PARTS 3

Ref.No.	Parts No.	Description	Q'ty	Ref.No.	Parts No.	Description	Q'ty
1	688-83383-11	BUZZER	1	10	92990-06600	.WASHER, plate	2
2	97780-50112	SCREW, tapping	1	11	663-82521-09	.WIRE, lead	1
3	688-83373-10	LEAD, horn	1	12	688-82520-00	LIGHT SWITCH ASSY	1 UR
4	688-W0088-40	PILOT LAMP KIT	1	13	688-82526-00	SWITCH, lamp	1 UR
5	663-84301-01	.PILOT LIGHT ASSY 1	1	14	6Y5-82149-00	WIRE, lead (BLUE)	1 UR
6	663-84309-00	.PLATE, set	1	15	6Y5-82117-00	WIRE, lead (BLACK)	1 UR
7	95428-31316	.SCREW, wood	4	16	6Y5-82521-00	WIRE, lead (YELLOW)	1 UR
8	697-81901-60	.CHARGE WARNING UNIT ASSY	1	17	6Y5-83553-00	WIRE, lead	1 UR
9	97780-60120	.SCREW, tapping	2	18	1E6-82151-00	.FUSE (10A)	1

Fig. 21 REPAIR KIT I

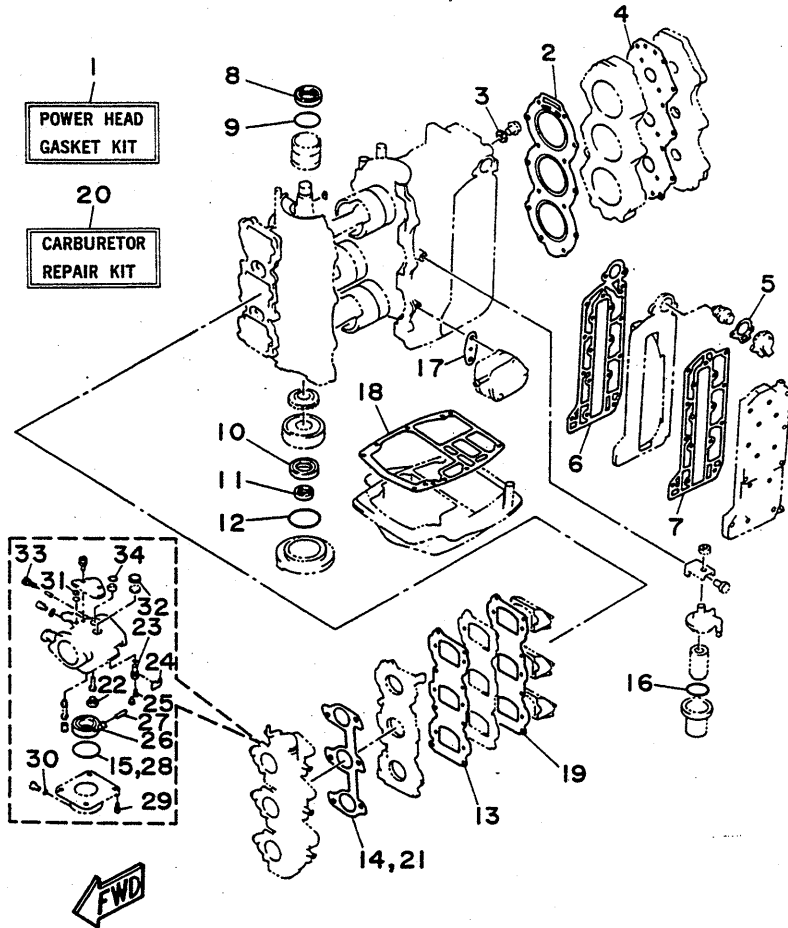


Fig. 21 REPAIR KIT I

Ref.No.	Parts No.	Description	Q'ty	Ref.No.	Parts No.	Description	Q'ty
1	6H3-W0001-00	POWER HEAD GASKET KIT	1	18	6H3-45113-00	.GASKET, upper casing	1
2	6H3-11181-01	.GASKET, cylinder head 1	1	19	6H3-13622-00	.GASKET, valve seat	1
3	90430-14115	.GASKET	1	20	6H3-W0093-01	CARBURETOR REPAIR KIT	1
4	6H3-11193-00	.GASKET, head cover 1	1	21	6H3-14198-01	.GASKET	1
5	6H3-12414-00	.GASKET, cover	1	22	676-14966-00	.CAP	3
6	6H3-41112-00	.GASKET, exhaust inner cover	1	23	6H3-14590-00	.NEEDLE VALVE ASSY	3
7	6H3-41114-00	.GASKET, exhaust outer cover	1	24	663-14159-00	.CLIP	3
8	93102-36M24	.OIL SEAL	1	25	676-14186-00	.PIN, float	3
9	93210-46M16	.O-RING	1	26	661-14985-00	.FLOAT	3
10	93102-30M23	.OIL SEAL	1	27	688-14548-00	.PIN, float arm	3
11	93106-18M01	.OIL SEAL	1	28	661-14984-00	.O-RING	3
12	93210-65M50	.O-RING	1	29	97980-04114	.SCREW, with washer	3
13	6H3-13621-00	.GASKET, valve seat	1	30	93210-04230	.O-RING	3
14	6H3-14198-01	.GASKET	1	31	663-14126-00	.GASKET	3
15	661-14984-00	.O-RING	3	32	688-14126-00	.GASKET	3
16	93210-37M25	.O-RING	1	33	692-14923-00	.SCREW, pilot	3
17	650-24431-00	.GASKET, fuel pump 1	1	34	93210-15M52	.O-RING	3

Fig. 22 REPAIR KIT 2

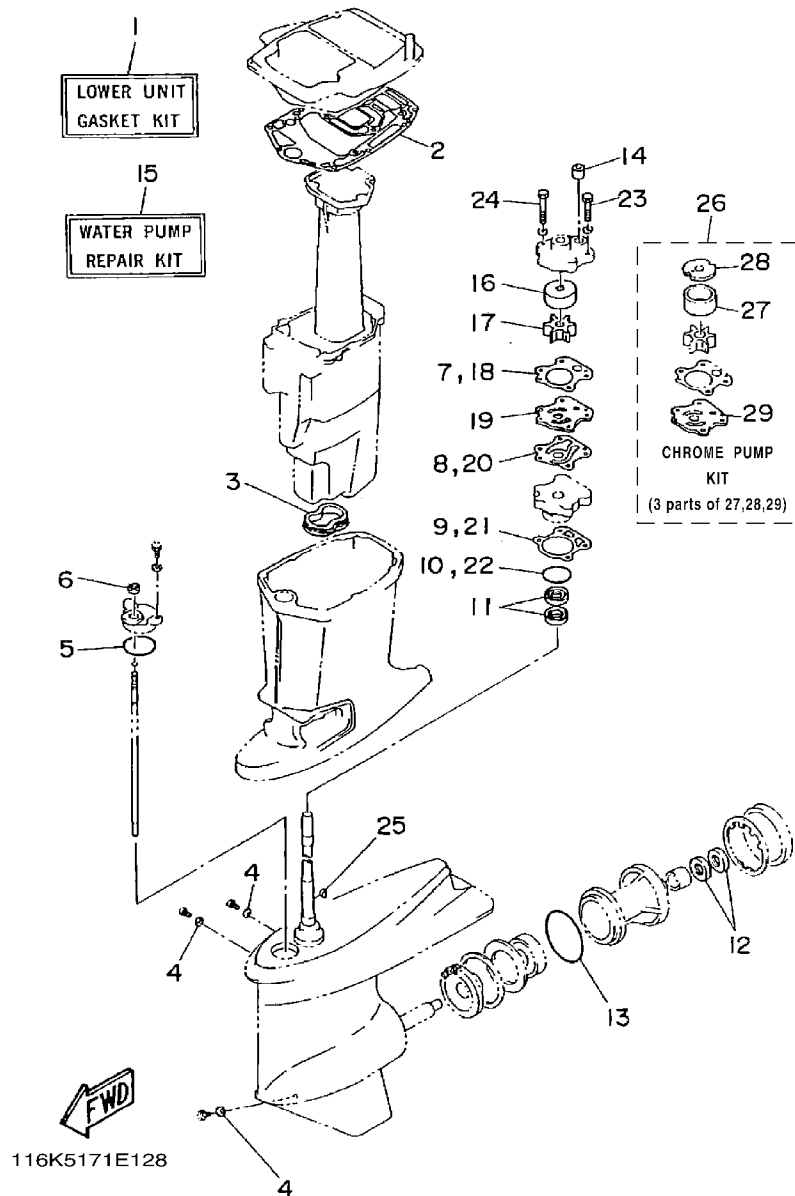


Fig. 22 REPAIR KIT 2

Ref.No.	Parts No.	Description	Q'ty	Ref.No.	Parts No.	Description	Q'ty
1	6H3-W0001-21	LOWER UNIT GASKET KIT	1	16	663-44322-00	.INSERT, cartridge	1
2	6H3-45114-01	.GASKET, upper casing	1	17	6H3-44352-00	.IMPELLER	1
3	6H3-45123-00	.GASKET, muffler	1	18	6H3-44315-00	.GASKET, water pump	1
4	90430-08020	.GASKET	3	19	6H3-44323-00	.OUTER PLATE, cartridge	1
5	93210-49046	.O-RING	1	20	6H3-44324-00	.GASKET, cartridge	1
6	93106-09014	.OIL SEAL	1	21	688-44316-01	.GASKET, water pump	1
7	6H3-44315-00	.GASKET, water pump	1	22	93210-46044	.O-RING	1
8	6H3-44324-00	.GASKET, cartridge	1	23	97395-08045	.BOLT	2
9	688-44316-01	.GASKET, water pump	1	24	97395-08055	.BOLT	2
10	93210-46044	.O-RING	1	25	90280-03M03	.KEY, woodruff	1
11	93101-23070	.OIL SEAL	2	26	6H3-W0078-0A	CHROME PUMP KIT	1
12	93101-25M03	.OIL SEAL	2	27	670-44322-01	.INSERT, cartridge	1
13	93210-85M97	.O-RING	1	28	670-44321-00	.INNER PLATE, cartridge	1
14	663-44366-00	.DAMPER, water seal	1	29	6H3-44323-40	.OUTER PLATE, cartridge	1
15	6H3-W0078-00	WATER PUMP REPAIR KIT	1				

NUMERICAL INDEX

Parts No.	Ref. No.	Parts No.	Ref. No.	Parts No.	Ref. No.	Parts No.	Ref. No.	Parts No.	Ref. No.
1E6-82151-00	18- 8	6H3-14413-00	3-19	6H3-44324-00	22- 8	6J2-41113-00-9M	1-40	6Y5-83553-00	18- 7
	20-18	6H3-14440-00	3-20		22-20	6J2-41131-01	11-11		20-17
6A0-14325-00	5-21	6H3-14457-01	3-21	6H3-44352-00	12-37	6J2-41137-00-94	11- 5	6Y5-83577-00	19- 4
6A0-24410-04	5-15	6H3-14578-00	4-32		22-17	6J2-42610-21-EJ	7- 1	6Y5-83590-00	19-10
6A0-24421-01	5-20	6H3-14590-00	4- 8	6H3-44361-00	13-13	6J2-42686-01	7-14	6Y5-83660-00	18-20
6E0-28193-00-94	6-11		21-23	6H3-44391-01	8- 2	6J2-42687-01	7-16	6Y5-85750-00	19-20
6E5-24367-01	8-26	6H3-14947-07	4- 4	6H3-44551-00-EJ	9-50	6J2-43627-00	12-17	624-14485-00	1- 5
6E5-42724-00	8-15	6H3-14948-18	4- 6	6H3-44552-01-94	9-59	6J2-43662-00	13-21	648-24411-00	5-16
6E5-81332-00	14-17	6H3-14992-00	4-17	6H3-44553-00-EJ	9-64	6J2-44117-01-94	10-30	648-24413-01	5-25
6E5-82148-00	9- 8	6H3-15359-00-94	2-13	6H3-45113-00	11-20	6J2-44120-00	10-26	648-24423-00	5-18
6F5-24563-00	5- 7	6H3-24313-00	5-34		21-18	6J2-44328-00	11-13	648-24424-00	5-17
6G1-14984-00	4-14	6H3-24314-00	5-36	6H3-45114-01	22- 2	6J2-45111-00-EJ	11- 1	648-24434-01	5-19
	21-15	6H3-41111-00-9M	1-38	6H3-45123-00	22- 3	6J2-45114-00	11- 9	648-24435-02	5-23
	21-28	6H3-41112-00	1-39	6H3-45155-00	11- 2	6J2-45127-00	11-12	648-24566-01	5-10
6G1-14985-00	4-12		21- 6	6H3-48538-00	10-41	6J2-45300-00-EJ	12- 1	648-42715-00	10-27
	21-26	6H3-41114-00	1-41	6H3-81303-A0	14- 7	6J2-45311-00-EJ	12- 2	648-43114-01	9- 2
6G1-24304-02	5- 1		21- 7	6H3-81337-00	14-20	6J2-45501-00	12-50	650-11370-00	1- 4
6G1-24305-00	6- 6	6H3-41134-00	11-10	6H3-81800-10	15- 1	6J2-45970-00	13-22	650-24351-01	6- 5
6G1-81970-61	16-14	6H3-41213-01	10-22	6H3-81807-10	15- 3	6J2-45972-00	13-22	650-24431-00	5-28
6G1-82151-00	16-15	6H3-41217-00	3-13	6H3-81810-10	15- 8	6K5-42717-00	8-14		21-17
6G1-82370-20	16-26	6H3-41238-00	10- 1	6H3-81820-11	15-13	6K5-85550-A0	14- 1	655-24521-01	5- 9
6H1-41237-00	10-14	6H3-41257-00	3-14	6H3-81830-10	15- 4	6Y1-24305-01	6- 8	655-24560-01	5- 6
	10-20	6H3-41271-00	3-16	6H3-81916-00	16-21	6Y1-24306-05	6- 1	656-W2810-01	6-10
6H2-14527-01	4-23	6H3-41611-00	14-13	6H3-81922-00	16- 5	6Y1-24360-02	6- 3	661-41262-02	3-15
6H2-14578-00	4-31	6H3-41612-00	14-14	6H3-82105-00	16-32	6Y5-W0080-12	18- 1		3-18
6H2-14980-00	4-15	6H3-41612-10	14-23	6H3-82117-00	16-33	6Y5-W0081-30	18- 9	663-14126-00	4-19
6H3-W0001-00	21- 1	6H3-41631-00	10- 2	6H3-82164-00	16-30	6Y5-W0088-00	18-19		21-31
6H3-W0001-21	22- 1	6H3-41632-00	10- 8	6H3-82590-01	16-34	6Y5-W0088-10	19- 9	663-14159-00	4- 9
6H3-W0070-22	7-17	6H3-41633-00	10-11	6H3-85510-A0	14- 2	6Y5-W0088-20	19-19		21-24
6H3-W0078-0A	22-26	6H3-42510-01-EJ	9-45	6H3-85520-00	14- 3	6Y5-W0088-31	19- 1	663-14523-00	4-29
6H3-W0078-00	22-15	6H3-42613-00-EJ	7-10	6H3-85540-11	16-11	6Y5-82117-00	20-15	663-14527-00	4-20
6H3-W0093-01	21-20	6H3-42615-00	7-13	6H3-85542-00-94	16- 1	6Y5-82149-00	20-14	663-14592-00	4-27
6H3-11181-01	1-30	6H3-42647-00-94	7- 2	6H3-85570-10	16-23	6Y5-82521-00	20-16	663-24411-00	5-24
	21- 2	6H3-42649-00-94	7- 3	6H3-86110-02	16-38	6Y5-83504-01	19- 2	663-42662-00	7- 4
6H3-11193-00	21- 4	6H3-42652-00	7- 5	6H3-86112-00	16-41	6Y5-83510-30	18-10	663-43116-00	9- 3
6H3-11325-00	1-16	6H3-42711-01-EJ	8- 1	6H3-86115-00	16-42	6Y5-83514-00	18- 6	663-43118-00-EJ	9- 5
6H3-11327-00-94	1-17	6H3-42716-02	8-13	6H3-86116-00	16-39		18-14	663-43123-00	9-10
6H3-11328-00	1-18	6H3-42725-00	8-16	6H4-42726-00	8-29	6Y5-83516-00	18- 3	663-43145-00	9-23
6H3-11400-01	2- 1	6H3-42727-00	8-20	6J2-W0004-00	3- 2	6Y5-83518-00	18-21	663-43318-00	9-30
6H3-11633-00	2- 9	6H3-42738-00-5B	8-17	6J2-W0090-02-EJ	1- 1		19- 5	663-43616-02	9-36
6H3-12411-01	1-33	6H3-42741-00-EJ	8-32	6J2-11111-01-94	1-25		19-11	663-43653-00	9-38
6H3-12413-00-9M	1-34	6H3-42768-00	8-25	6J2-11610-02	2- 8		19-21	663-44144-01	12-21
6H3-12414-00	1-35	6H3-42771-00-EJ	8-33	6J2-11610-12	2- 8	6Y5-83523-00	18- 5	663-44151-00	12-62
	21- 5	6H3-42813-00	8- 7	6J2-11610-22	2- 8		18-13	663-44155-01	12-20
6H3-13621-00	3- 6	6H3-42815-00-EJ	8- 3	6J2-11631-02-96	2- 7	6Y5-83536-00	18-22	663-44311-02	12-33
	21-13	6H3-42816-00	8- 9	6J2-11635-02	2- 7		19- 6	663-44315-00	12-35
6H3-13622-00	3- 8	6H3-42817-00-EJ	8- 4	6J2-11636-02	2- 7		19-12	663-44316-00	12-42
	21-19	6H3-42818-00	8-10	6J2-13610-00	3- 1		19-22	663-44322-00	12-34
6H3-13624-00-94	3-17	6H3-44121-00	10-36	6J2-14301-05	4- 1	6Y5-83536-10	18-12		22-16
6H3-13641-01-94	3- 5	6H3-44315-00	22- 7	6J2-14302-05	4- 2	6Y5-83536-40	18- 4	663-44323-00	12-43
6H3-14198-01	3-12		22-18	6J2-14303-05	4- 3	6Y5-83540-13	18- 2	663-44324-00	12-44
	21-14	6H3-44323-00	22-19	6J2-14793-00	11- 6	6Y5-83544-00	19-14	663-44341-00-94	12-39
	21-21	6H3-44323-40	22-29	6J2-15100-01-94	1- 2		19-24	663-44366-00	12-36

NUMERICAL INDEX

Parts No.	Ref. No.	Parts No.	Ref. No.	Parts No.	Ref. No.	Parts No.	Ref. No.	Parts No.	Ref. No.
663-44366-00	22-14	670-45997-02	13-17	688-83664-00	18-23	90119-10M07	1- 7	90386-13M38	8- 5
663-44367-00	13-15	675-45551-00	12-52		19- 3	90149-05M05	17-10	90386-22M15	9-22
663-44575-00	9-57	675-45560-00	12-54		19-13	90157-06M00	10- 3	90386-30O48	9-47
	9-73	675-45571-01	12-64		19-23	90157-06M01	8-27	90387-06M43	16- 3
663-45119-00	9-17	676-11372-00	1-26	688-83665-00	18-24	90170-12138	12-53	90387-06M59	10-12
663-45251-00	9- 6	676-14186-00	4-10	688-83666-00	18-26	90170-20137	14-11	90387-06M60	10- 6
663-45321-00	12-14		21-25	688-83667-00	18-25	90171-16011	13-19		10-24
663-45331-00-94	12-25	676-14943-39	4- 5	688-85752-01	19-25	90179-06066	9-63	90387-06M69	8-22
663-45375-00	12-10	676-14966-00	4- 7	689-W4266-10	7-21	90183-05M01	7-15	90387-10M03	9-11
663-45376-00-94	12- 9		21-22	689-W4266-20	7-18	90185-05002	13- 4	90387-10269	9-28
663-45552-00	12-51	676-43160-02	9-41	689-W4266-40	7-19	90185-10051	9-72	90430-08020	12-11
663-45567-01-10	12- 7	676-43165-00	9-42		7-20		9-79		22- 4
663-45567-01-12	12- 7	679-14555-00	4-26	689-41273-00	3-17	90185-22043	9-21	90430-12072	13-14
663-45567-01-15	12- 7	679-41636-00	10-15	689-81809-11	15- 6	90201-05652	4-28	90430-14115	1-24
663-45567-01-18	12- 7	679-45371-00	13-10	689-81811-11	15-11	90201-06M02	8-11		18-28
663-45567-01-30	12- 7	682-41237-50	10-19	689-81812-11	15-10	90201-06M31	10- 9		19-16
663-45567-01-40	12- 7	682-82556-00	17- 5	689-81813-10	15-12	90201-06416	8-23		21- 3
663-45567-01-50	12- 7	688-W0088-40	20- 4	689-81826-10	15-14	90201-08M61	1-32	90445-07M02	1-11
663-45576-00	12-24	688-11119-00	1-21	689-81840-11	15- 9	90201-11M22	9-71	90445-07M44	1- 9
663-45577-01-10	12-23	688-11370-00	1- 3	689-81844-11	15- 5	90201-12M16	9-53	90445-07M45	1-12
663-45577-01-12	12-23	688-11634-10	2-10	689-81850-11	15- 7	90201-13M19	9-55	90445-07M82	1-13
663-45577-01-15	12-23	688-14126-00	4-21	689-81857-11	15- 2	90201-20M21	9-69	90445-09M08	1-27
663-45577-01-18	12-23		21-32	689-82510-00	17- 2	90201-20417	2-12	90445-09M22	5-35
663-45577-01-30	12-23	688-14527-00	4-22	689-82570-15	17- 1	90201-21M18	14-12	90445-09M75	5- 4
663-45577-01-40	12-23	688-14548-00	4-13	689-82571-02	17- 6	90201-22428	9-20	90445-09072	5-13
663-45577-01-50	12-23		21-27	692-14923-00	4-25	90201-22429	12-63		5-31
663-45587-01-10	12- 5	688-24378-00	5-33		21-33	90201-30M00	9-46	90445-11M05	6- 4
663-45587-01-12	12- 5	688-44122-00	10-39	696-43111-00-EJ	9- 1	90201-31418	9-48	90445-11M06	6- 2
663-45587-01-15	12- 5	688-44194-00	10- 5	696-43131-01	9-19	90202-07M07	10-38	90446-10M02	16-48
663-45587-01-18	12- 5	688-44316-01	22- 9	696-43311-00-EJ	9-14	90202-12060	13-12	90464-04M12	16-10
663-45587-01-30	12- 5		22-21	696-43610-00					

NUMERICAL INDEX

Parts No.	Ref. No.	Parts No.	Ref. No.	Parts No.	Ref. No.	Parts No.	Ref. No.	Parts No.	Ref. No.
90502-10M04	9-44	92990-08100	9-61	93306-306V1	2- 3	97313-08016	15-19		
90506-12078	9-34		9-76	93311-636U6	2- 2	97313-08020	1-22		
90508-29M19	10-10		11- 8	93315-322V2	12- 3	97313-08035	15-15		
90601-31402	18-17		11-15	93317-22204	12-27	97375-08015	11- 7		
	18-29		11-17	93332-00003	12- 8	97395-06016	7- 6		
91490-20015	9-40		11-19	93332-00023	12- 6		12-18		
	10-35		11-23	93410-28M06	9-51	97395-06020	2-17		
91490-25030	9-33		13- 9	93440-49M04	2- 5	97395-06025	10- 7		
91490-30030	9-29	92990-08200	10-34	93501-04M02	10-28	97395-08020	11-14		
91490-40030	13-20	92990-08600	11-25	93603-18M09	2-11	97395-08025	9-60		
91590-08030	9-39		12-47	93604-08062	12-45		11-22		
91690-30010	9-43		12-49	93606-12019	11- 3	97395-08030	11-16		
	16-40		15-16		11-21	97395-08045	12-48		
91690-40040	9-18		15-20		13- 5		22-23		
92180-06025	9- 7	92990-10100	13- 7	93608-12063	1- 6	97395-08055	12-46		
92380-06015	9-65	92990-10600	9-12	93700-06004	9-16		22-24		
92503-06015	14-22	92990-16200	13-18	94702-00247	1-44	97395-08060	13- 8		
92503-06045	3-22	92995-10600	9-81	95303-06600	10- 4	97395-10040	13- 6		
92901-04100	17- 9	93101-22067	12-28	95303-08600	5-11	97780-40116	18-18		
92990-05100	3- 4	93101-23070	12-40	95380-03600	5-22		18-30		
	5-27		22-11	95380-05600	10-16	97780-50112	20- 2		
	14- 6	93101-25M03	22-12		10-21	97780-60120	20- 9		
	17-12	93102-30M23	2-14		17-11	97803-06010	14-18		
92990-05600	16-17		21-10	95380-06700	16- 7	97980-04114	4-16		
	17-13	93102-36M24	2- 4	95380-08600	9-37		21-29		
92990-06100	7- 7		21- 8	95380-10600	9-13	97980-05310	4-24		
	16- 9	93106-09014	12-16		9-82	97985-06212	16-22		
92990-06200	16- 8		22- 6	95380-12800	9-58	98303-04008	17- 8		
92990-06600	1-20	93106-18M01	2-15	95428-31316	20- 7	98501-05016	14- 5		
	1-37		21-11	97013-06012	8-12	98503-05025	16-16		
	1-43	93109-30M03	9-49		16-35	98580-04008	4-11		
	2-18	93210-03261	16-45	97013-06035	1-42	98580-05020	3- 3		
	3-10	93210-04228	4-34	97090-08035	9-75	98580-05530	5-26		
	5- 3	93210-04230	4-18		11-18	98580-06012	9- 9		
	5-30		21-30	97313-06014	5-12		14-15		
	7- 8	93210-08287	6- 7	97313-06016	1-19	98580-06025	16-12		
	7-12		6- 9		7-11	98680-05540	13- 3		
	8-19	93210-15M52	4-33		8-18	99001-08600	12-22		
	8-28		21-34		16-28				
	8-35	93210-37M25	5- 8		16-43				
	8-37		21-16	97313-06020	8-36				
	10-32	93210-41042	12-41		10-31				
	12-19	93210-46M16	2- 6	97313-06025	1-36				
	14- 9		21- 9		3- 9				
	14-16	93210-46044	22-10		5- 2				
	14-19		22-22		8-34				
	15-18	93210-49046	12-15		10-25				
	16-13		22- 5		15-17				
	16-25	93210-65M50	2-16		16-24				
	16-29		21-12	97313-06030	8-24				
	16-36	93210-66M98	12-29		14- 8				
	16-44	93210-85M97	22-13	97313-06040	5-29				
	20-10	93306-00702	12-26	97313-06095	3-11				



YAMAHA MOTOR CO., LTD.
2500 SHINGAI IWATA-SHI SHIZUOKA-KEN JAPAN

Copyright

All rights reserved.

No part of this publication may be
reproduced without permission.



Printed in Japan

Dec. 1989

106J2-100E1 (英)