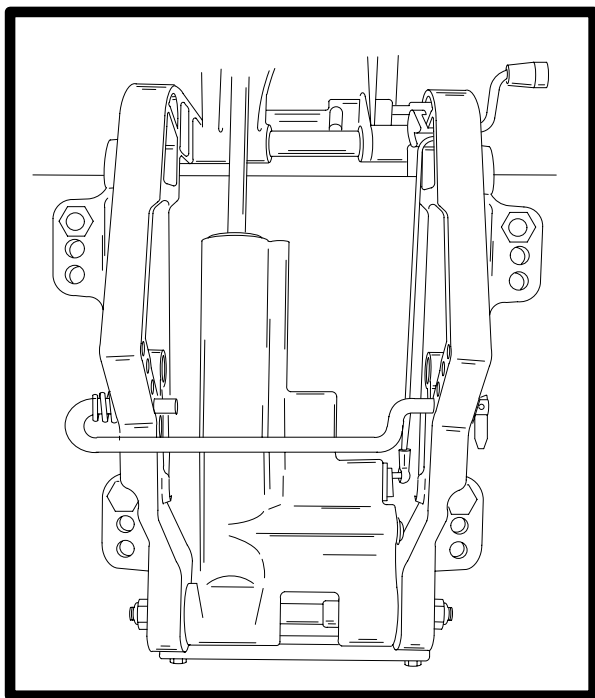




# MID-SECTION



5

E

**40/50 MANUAL TILT ASSIST**



# Table of Contents

	Page
Clamp Bracket .....	5E-2
Hydraulic Assist Adjustments .....	5E-4
Manual Trim System Removal .....	5E-4
Manual Trim System Installation .....	5E-5

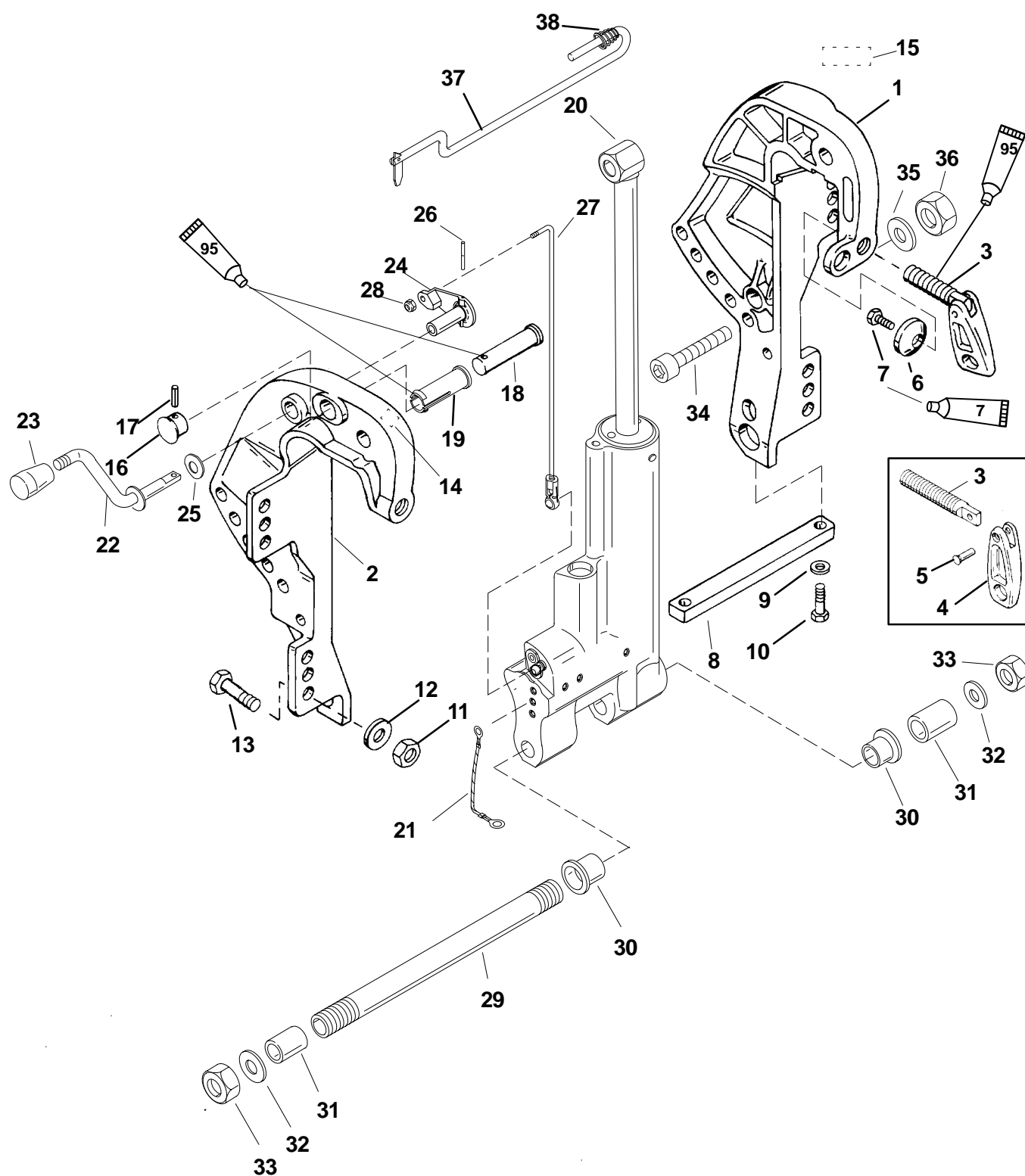


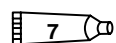
**Notes:**





# Clamp Bracket



 7 Loctite "271" Adhesive Sealant (92-809819)

 95 2-4-C w/Teflon (92-825407A12)



# Clamp Bracket

REF. NO.	QTY.	DESCRIPTION	TORQUE		
			lb. in.	lb. ft.	N-m
1	1	CLAMP BRACKET (BLACK) PORT			
	1	CLAMP BRACKET (GRAY)			
2	1	CLAMP BRACKET (BLACK) STARBOARD			
	1	CLAMP BRACKET (GRAY)			
3	2	THUMB SCREW ASSEMBLY			
4	2	HANDLE			
5	2	RIVET MANUAL			
6	2	WASHER			
7	2	SCREW (Hex shoulder)	60	5	6.8
8	1	ANODE			
9	2	WASHER			
10	2	SCREW (M6 x 25)	60	5	6.8
11	2	NUT (.500-20)	Drive Tight		
12	2	WASHER			
13	2	SCREW (.500-20 x 4 IN.)			
14	1	DECAL-Tilt Lock			
15	1	DECAL-Warning			
16	1	CAP-Tilt Stop Pin			
17	1	ROLL PIN			
18	1	BUSHING			
19	1	PIN-Tilt Stop			
20	1	TRIM, Hydraulic assist			
21	1	CABLE			
22	1	TILT LEVER			
23	1	TILT KNOB GAS ASSIST TRIM			
24	1	LEVER ARM			
25	1	WAVE WASHER			
26	1	ROLL PIN (1/8 x 3/4 IN.)			
27	1	LINK			
28	1	NUT			
29	1	ANCHOR PIN (14MM)			
30	2	BUSHING			
31	2	BUSHING GAS ASSIST TRIM &			
32	2	WASHER POWER TRIM MOUNTING			
33	2	NUT			
34	2	SCREW (M10 x 40)			
35	2	WASHER			
36	2	NUT			
37	1	TILT LOCK PIN NON POWER TRIM			
38	1	SPRING			



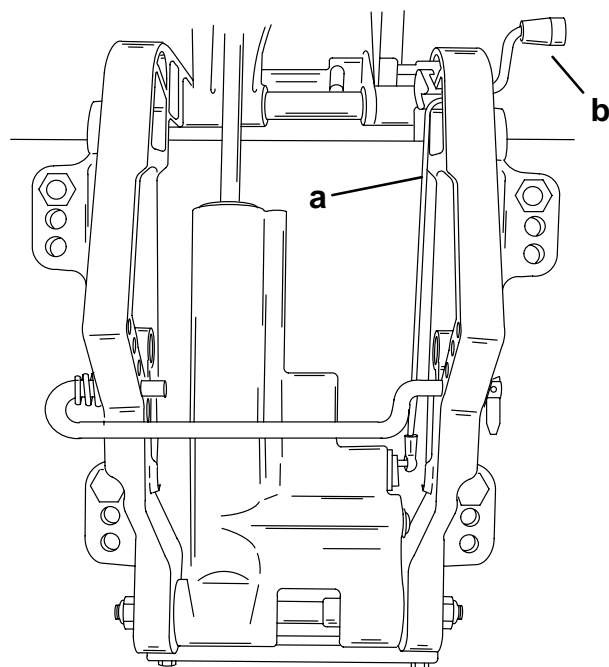
## Hydraulic Assist Adjustments

### **⚠ WARNING**

This hydraulic assist system's contents are under pressure. Do not puncture, disassemble or apply heat or flame.

**IMPORTANT:** If debris or leaking is found, unit must be replaced. This hydraulic assist system is **NOT SERVICEABLE**. Replace if necessary.

1. Check manual release cam adjustment. Cam must open and close freely. Adjust cam link rod as necessary.

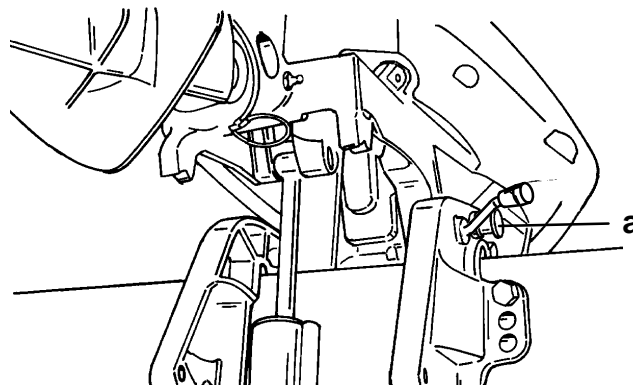


a - Link Rod  
b - Manual Release Lever

2. Check for external leaks in the manual tilt system. Replace unit if leak is found.

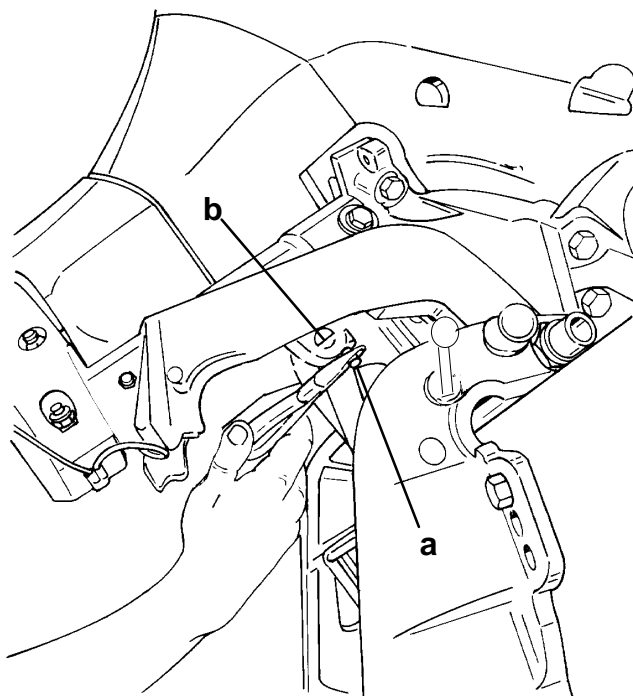
## Manual Trim System Removal

1. Tilt outboard to the full up position and support with tilt stop pin.



a - Tilt Stop Pin

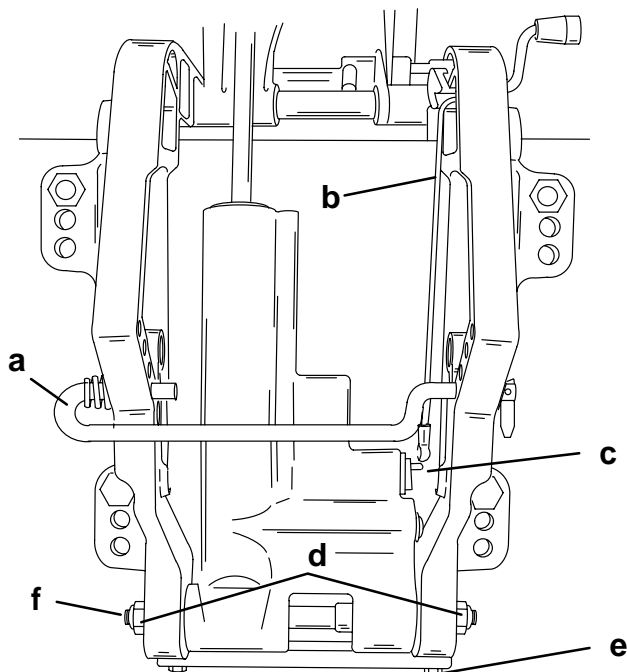
2. Remove the trilobe pin.
3. Drive out the upper pivot pin.



a - Trilobe Pin  
b - Upper Pivot Pin



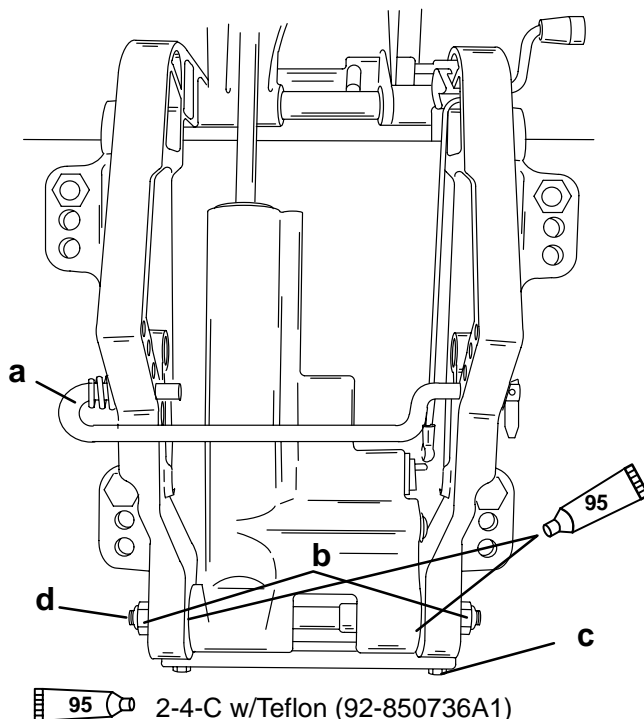
4. Disconnect link rod from cam lever.
5. Remove tilt lock pin. Remove nuts and washers securing the lower pivot pin. Remove anode bolt to remove ground strap. Remove lower anchor pin. Retain the anchor pin bushings from the clamp brackets and trim unit.
6. Remove trim unit.



- a - Tilt Lock Pin  
b - Link Rod  
c - Cam Lever  
d - Nut (2)  
e - Anode Bolt/Ground Strap  
f - Pivot Pin

## Manual Trim System Installation

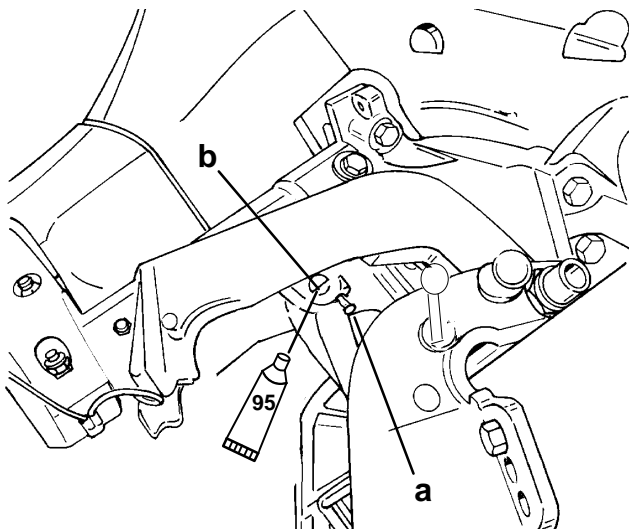
1. Apply 2-4-C Marine Lubricant to surface of lower anchor pin and anchor pin hole. Place trim into proper position. Install anchor pin and bushings into anchor pin hole and clamp brackets. Install nuts and washers to anchor pin and tighten securely. Install ground strap and anode bolt.
2. Install tilt lock pin.



- a - Tilt Lock Pin  
b - Nut (2)  
c - Anode Bolt/Ground Strap  
d - Pivot Pin



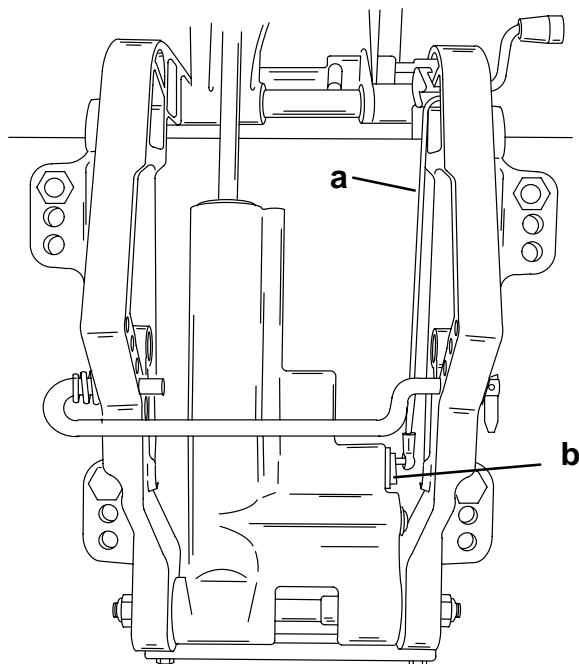
3. Apply 2-4-C Marine Lubricant to surface of upper pivot pin, pivot hole and shock rod hole.
4. Position trim into position and drive pivot pin into swivel bracket and through shock rod until pivot pin is flush with swivel bracket. Drive trilobe pin into its hole until seated.



 95 2-4-C w/Teflon (92-850736A1)

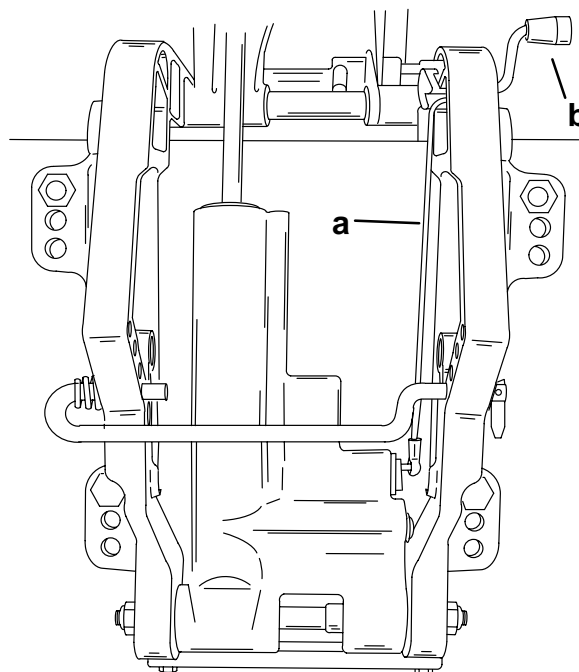
a - Trilobe Pin  
b - Upper Pivot Pin

5. Connect link rod onto cam lever.



a - Link Rod  
b - Cam Lever

6. Check manual release cam adjustment. Cam must open and close freely. Adjust cam link rod as necessary.



a - Link Rod  
b - Manual Release Lever