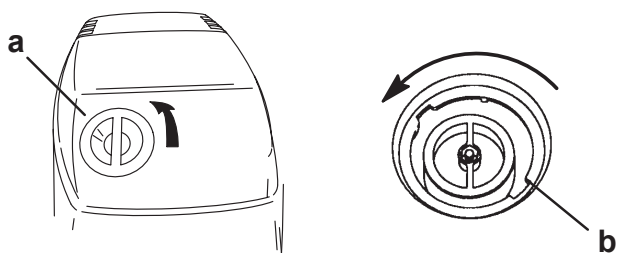




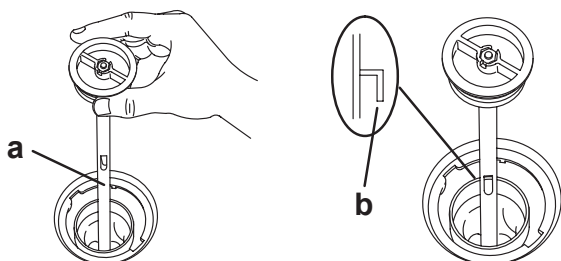
## Filling Oil Tank

1. Quicksilver 2-Cycle Outboard Oil is recommended for this oil injection system. In an emergency, when Quicksilver 2-Cycle Outboard Oil is not available, substitute a high quality 2-cycle oil that is intended for outboard use and meets BIA rating TC-WII or TC-W3, shown on oil container. BIA rating TC-W is the Boating Industry Association's designation for approved, 2-cycle water-cooled outboard oils.
2. Open cowl cap. Turn the oil fill cap to the left and remove.



a - Cowl Cap  
b - Oil Fill Cap

3. Use the dipstick to check oil level.
4. Hook the dipstick on the tank during filling.

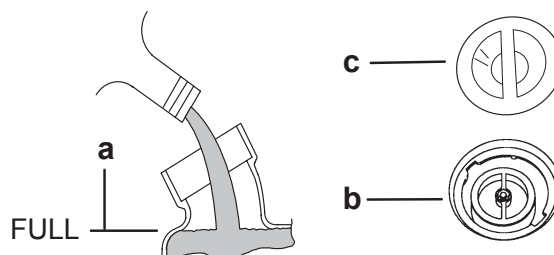


a - Dipstick  
b - Hook

5. Slowly fill the oil tank with the specified oil. **DO NOT OVERFILL**— add only enough oil to bring the oil level up to the bottom of the fill neck.

**NOTE:** The oil tank capacity for 3 cylinder models is 3.2 qt. (3.0 liters) and 4 cylinder models is 5.13 qt. (4.9 liters).

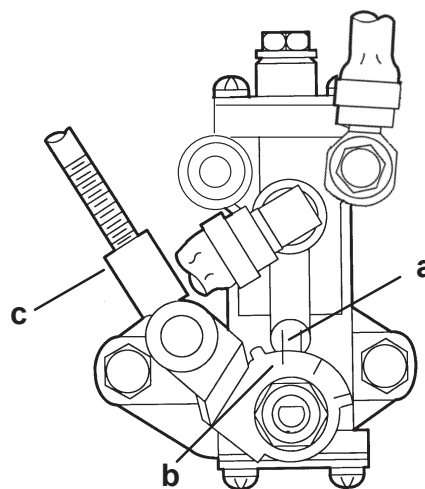
6. Install oil filler cap and re-tighten. Reinstall the cowl cap.



a - Bottom of Fill Neck  
b - Oil Filler Cap  
c - Cowl Cap

## Carburetor/Oil Pump Synchronization

1. While holding throttle arm at idle position, adjust length of link rod so that stamped mark of oil pump body aligns with stamped mark of oil pump lever, and lever is in closed position.



a - Mark on Body  
b - Mark, Fully Closed on Lever  
c - Link Rod